

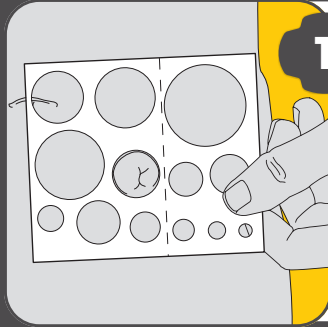
Instructions for use

Urostomy

1
Piece



CUT-TO-FIT ONLY: MEASURING POUCH



1

Check the size of your stoma using a measuring card.

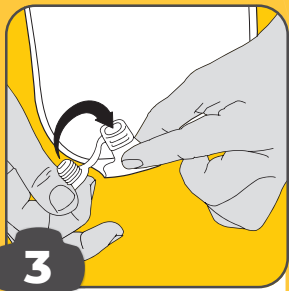
TIP: Re-measure your stoma intermittently, to ensure your pouch fits correctly.



2

Cut the baseplate to fit the size and shape of your stoma, leaving 2-3 mm clearance.

APPLYING POUCH



3

Before applying the pouch, close the bung.



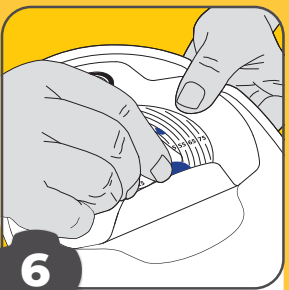
4

For a more discreet look, the bung can be tucked up and held in place by the split in the fabric.



5

Clean the skin around your stoma by gently patting. Dry the skin thoroughly by gently patting again (do not rub).



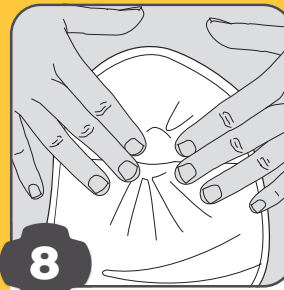
6

Remove the Easy2peel[™] cover using the blue tab at the bottom, exposing the adhesive.



7

Fold your pouch in half. Line up the bottom edge of the hole to the bottom edge of the stoma. Press the lower half of the pouch into place.

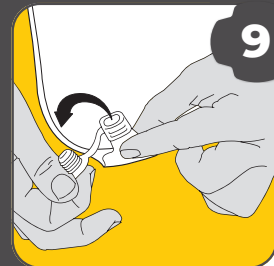


8

Fold the top of the pouch over your stoma and press adhesive to the skin.

TIP: Hold for at least 30 seconds to promote adhesion.

EMPTYING POUCH



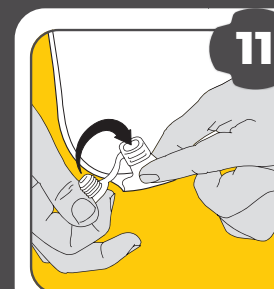
9

Unplug the bung while pinching the silicone outlet to stop urine flow.



10

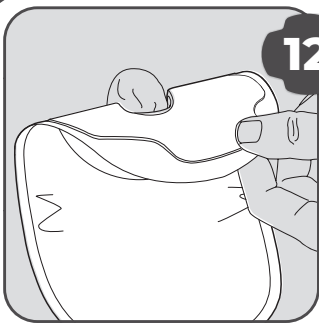
Point the bung towards the toilet bowl and slowly release the silicone outlet.



11

Once emptied, reinsert plug into bung and tuck into the split in the fabric as shown in step 4.

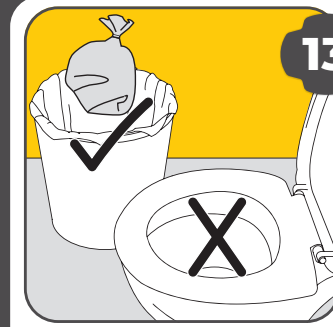
REMOVING POUCH



12

Starting at the top, gently peel the edge of the baseplate away from the skin, supporting the skin with the other hand. Continue to peel it gently downwards, removing it from the skin.

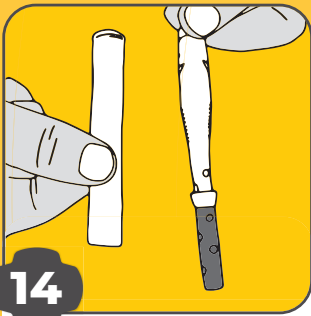
TIP: The use of a medical adhesive remover product is highly recommended.



13

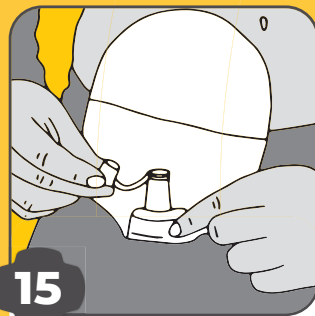
Dispose pouch in accordance with your local waste disposal regulations.

NIGHT DRAINAGE BAG



14

Remove plastic tube from tip of night drainage bag. Do not discard.



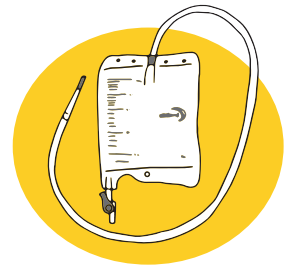
15

Unplug urostomy bung.



16

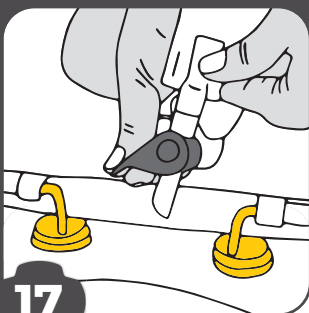
Insert end of night drainage bag into open bung of pouch, ensuring it is pushed in well and is secure.



WELLAND NIGHT DRAINAGE BAG

Welland's Easiflo™ night drainage ensures a continuous flow even if the urostomy bag twists or kinks during the night.

EMPTYING & CLEANING NIGHT DRAINAGE BAG



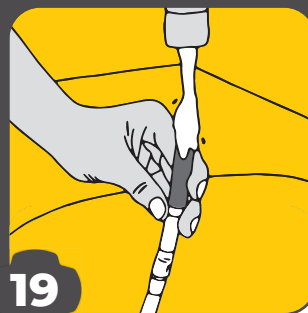
17

Empty bag into toilet by turning outlet tap down.



18

Replace plastic tube over tip of night drainage bag.



19

Rinse bag with tap water. Hang to dry.



OMNIGON

AU 1800 819 274 info@omnigon.com.au
NZ 0800 440 027 www.omnigon.com.au