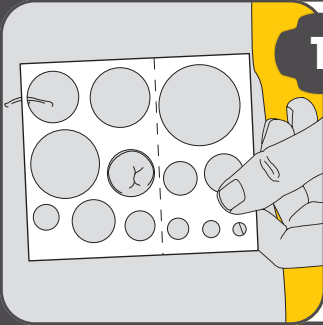


# Instructions for use Ileostomy

1  
Piece



## CUT-TO-FIT ONLY: MEASURING POUCH

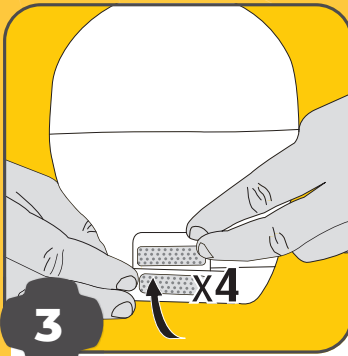


**1** Check the size of your stoma using a measuring guide.  
**TIP:** Re-measure your stoma intermittently to ensure your pouch fits correctly.

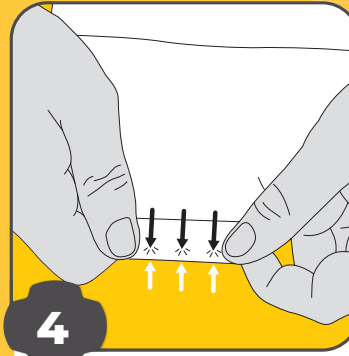


**2** Cut the baseplate to fit the size and shape of your stoma, leaving 2-3 mm clearance.

## APPLYING POUCH



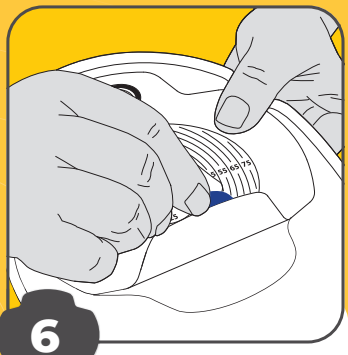
**3** Before applying your pouch, close the outlet by folding it 4 times.



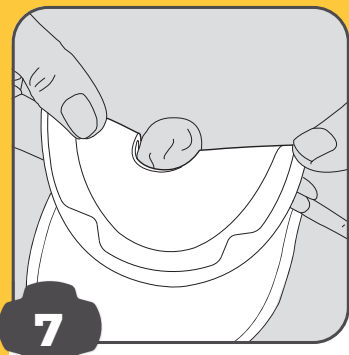
**4** To close the outlet, start at the edge of the hook to hook fastening system, and click towards the middle.



**5** Clean the skin around your stoma by gently patting. Dry the skin thoroughly by gently patting again (do not rub).



**6** Remove the Easy2peel™ cover using the blue tab at the bottom, exposing the adhesive.



**7** Fold your pouch in half. Line up the bottom edge of the hole to the bottom edge of the stoma. Press the lower half of the pouch into place.



**8** Fold the top of the pouch over your stoma and press the adhesive to the skin.  
**TIP:** Hold for at least 30 seconds to promote adhesion.

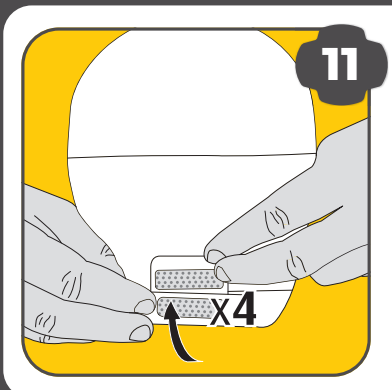
## EMPTYING POUCH



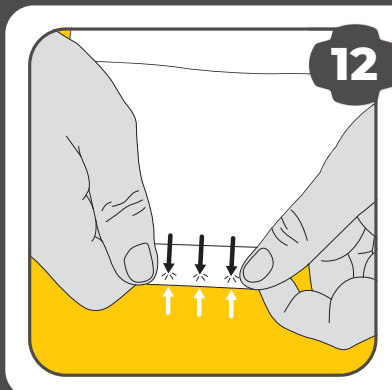
**9** Open the outlet of your pouch by peeling back the edge of the hook to hook fastening system. Unfold the outlet 4 times.



**10** Lift the white easy grip tab and gently squeeze the sides of the outlet. Empty contents into the toilet. Use toilet paper to clean the outlet.



**11** Close the outlet by folding it 4 times.



**12** To close the outlet, start at the edge of the hook to hook fastening system, and click towards the middle.

## REMOVING POUCH



**13** Starting at the top, gently peel the edge of the baseplate away from the skin, supporting the skin with the other hand. Continue to peel it gently downwards, removing it from the skin.

**TIP:** Use a medical adhesive remover product to make the removal of your pouch easier.



**14** Dispose pouch in accordance with your local waste disposal regulations.