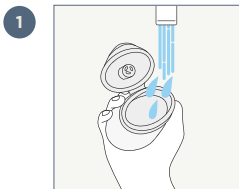
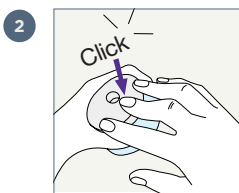


Qufora® IrriSedo MiniGo

Quick guide



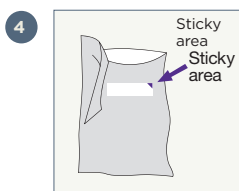
1 Wash and dry your hands. Open the flip lid and fill the soft pump up to the inner rim with luke warm tap water (36-38°) by holding it under the tap with the lid open.



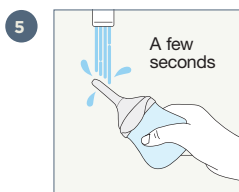
2 Once the soft pump is filled to the inner rim, hold onto the top part of the pump and press down on the lid until you hear the click sound.



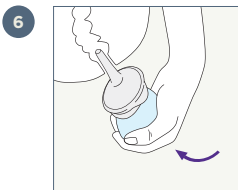
3 Open the cone pouch at the perforated line. Whilst the cone is still in the pouch, press the cone firmly on to the small round opening on the lid.



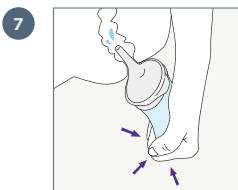
4 Attach the empty pouch to a surface using the sticky area on the back of the pouch.



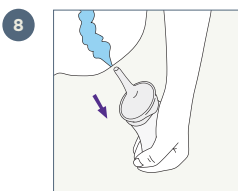
5 To activate the hydrophilic coating on the cone wet it in water up to its base. Gently squeeze the soft pump until water comes out of the cone tip to remove the air. It is now ready to use.



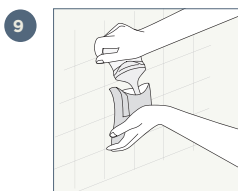
Sit on or over the toilet. Carefully guide the cone up to its base into the rectum.



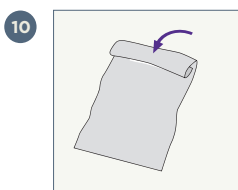
Now the cone is in place, gently squeeze the soft pump to instil water into the rectum. The soft pump can be squeezed several times to instil the water.



Remove the cone from the rectum. Faecal matter and water will be expelled into the toilet.



Place the used cone into the pouch and separate the two parts.



The pouch can be folded and sealed using the sticky area, then disposed of in household waste. The cone is single use and must not be used again.

Cleaning and Storage

Empty the pump of any residual water. Clean the outside of the soft pump with mild soapy luke warm water, rinse and dry. Store with the flip lid open, in a dry and ventilated place between 0 and 30°, and away from direct sunlight and heat. Wash and dry your hands.



Before use always consult the 'Instructions for use' document delivered with the product