

# Stoma product tool kit

All the help you need

Find the  
SAS monthly  
allowance  
next to each  
product



OMNIGON

Care Solutions

# SEAL/WASHER



## Welland HyperSeal

Large 2.5mm thick **XMHWA350** (5/box)  
Small 4mm thick **XMHWA400** (30/box)

### Precut 2.5mm thick:

20mm **XMHWA300** (30/box)  
30mm **XMHWA310** (30/box)  
40mm **XMHWA320** (30/box)  
50mm **XMHWA330** (30/box)



30  
seals per  
month

## Eakin Cohesive Seal

Large 2.1mm thick **839001** (10/box)  
Small 4.2mm thick **839002** (30/box)  
Slims 3mm thick **839005** (30/box)  
Stoma Wrap 3mm thick **839006** (10/box)

## PRODUCT INFO

Absorbent seal to help prevent leaks and skin damage.

Individually packaged.

Stretch, mould or wrap around the stoma. Fill dips and creases.

Welland seal contains Manuka honey to promote healthy skin.

Moulds to contours to give extra security from leaks.

Pre-cut sizes available.

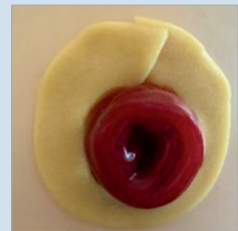
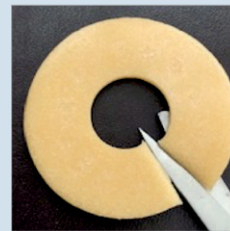
## HOW TO USE

There are 2 ways to apply the seal. Skin should be clean and dry first.



1. Stretch the seal as needed and pop it over the stoma. Gently mould it into the stoma so it is snug.

2. Tear/cut and wrap seal around the stoma edge, re-join at the top.



The hole in the baseplate should be a little larger when using a seal.



## Welland Belt with Adjustable Velcro

Small 120cm **XBLTS01**  
Large 145cm **XBLTL01**



## BBraun Belt

Fits 60-150cm **5028**

4 belts  
per year

## Eakin Pelican Belt

Fits 45-130cm **839520**  
Fits 100-200cm **839521**



## PRODUCT INFO

Each belt is specific to a brand of pouch.

Not all pouches have a belt attachment.

A belt can improve the security of the pouching system.

Soft fabric for comfortable use.

Adjustable sizes.

Machine washable in low temperatures.

Dry belts away from direct heat.

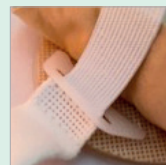
Replace belt when elastic is no longer holding firm support.

Best used during day when active.

Removable at night for sleeping.

## HOW TO USE

**Welland** Slide the Velcro ends through lugs on the sides of a Welland baseplate or pouch, adjusting it around the waist and folding the Velcro back on to the fabric to secure. Aim for a firm (but not too tight) fit.



**BBraun** Hooks into the lugs on side of baseplate/pouch, with 3 lug positions to choose from for a custom fit. Use the buckle slide to adjust for a firm (but not too tight) fit.



**Eakin Pelican** Hooks in to the plastic lugs on the sides of a baseplate/pouch, adjusting it around the waist using the buckle slide. Aim for a firm (but not too tight) fit.



# BELT



# ADHESIVE REMOVER

## PRODUCT INFO

Silicone based wipes assist in gentle removal of adhesive products from the skin.

No alcohol, no sting.

Helps prevent skin damage as stoma pouches/products are removed.

Helps prevent skin tears.

Reduces discomfort with pouch removal.

## HOW TO USE

### REMOVER SPRAY

The spray can be used at any angle.

Start at top of the pouch edge. Gently peel a section back from skin. Spray in between the pouch and skin while gently peeling the pouch away from the skin.

A damp cloth may assist. Spray again as pouch peels away from below the stoma.

### REMOVER WIPES

Remove wipe from packet, use unfolded or folded.

Start at the top of the pouch edge. Gently peel a section back from the skin. Use wipe on the skin between back of pouch and skin. Do this while gently pressing the skin away from the pouch.

2 sprays per month

60 wipes per month



**Welland Adhesive Remover Spray**  
WAB050



**Eakin Release Spray**  
839023



**Welland Adhesive Remover Wipes**  
WAD060 (60/box)



**Eakin Release Wipes**  
839024 (30/box)

## PRODUCT INFO

Silicone based skin barrier. No alcohol, no sting.

Protects the skin from damage caused by removal of adhesives.

May protect skin from damage caused by exposure to urine or stool (leakage).

## BARRIER FILM

### HOW TO USE

The spray can be used at any angle.

The wipe is removed from the packet and wiped across the clean dry skin around the stoma.

Wait for a few seconds as barrier film dries, then apply stoma products as usual.



**Welland Barrier Film Spray**  
WBS050

6 sprays per year



**Welland Barrier Film Wipes**  
WBF060 (60/box)

60 wipes per month

## PRODUCT INFO

Assists in absorbing moisture from damaged skin around the stoma when there is a weepy, moist ulcer or abrasion.

Promotes adhesion of the pouch.

Not needed on skin that's in good condition.

Semi-transparent bottle allows you to see how much is left.

## HOW TO USE

Gently wash and dry the skin well.

Remove cap, tip bottle upside down and puff powder on to weepy area/s. Don't worry if it gets on the stoma.

Dust the excess powder away, so a thin film covers the damaged area only.

Apply stoma products as usual.



Once skin is no longer moist then stop the use of the powder.



2 bottles per month

**Welland Stoma Powder**  
WPP025

# STOMA POWDER

# BASEPLATE EXTENDER



**Welland HydroFrame  
with Manuka Honey**  
Standard XMHWAFH33 (20/box)  
Mini XMHWAFM33 (30/box)

## PRODUCT INFO

100% hydrocolloid flange extenders work with any type of pouch.

Minimise risk of leakage from specific spots where there are uneven contours.

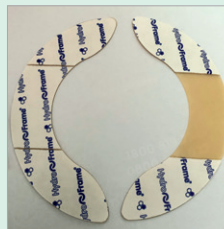
May give longer pouch wear time.

Can be applied anywhere around the edge of the pouch.

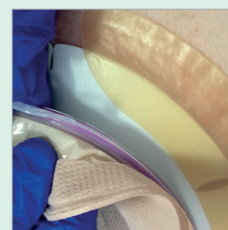
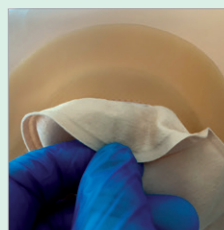
Also available in a mini size.

## HOW TO USE

HydroFrames are applied to clean, dry skin. Peel away the middle piece of backing paper on the HydroFrame. Hold the edges and apply the HydroFrame to the edge of the baseplate or base of pouch (1/2 on pouch and 1/2 on skin).



Once applied to the skin, remove the 2 outer sections of backing paper and smooth on to the skin. Using your hand gently warm the product to the skin for a minute to promote good adherence.



**Eakin Perform**  
**839020**  
(60/box)  
Restricted item -  
authority required

## PRODUCT INFO

Solidifying agent (goes in pouch).

Turns liquid output into a gel reducing risk of a leak or noise.

Useful at night to keep output thicker.

Reduces output odour.

Do not break open the sachet...it goes into the pouch whole (see photos).

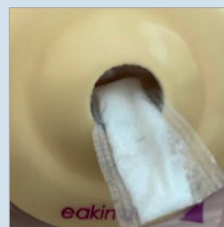
Restricted item on SAS. Authority form to be completed by STN.

**Do not take sachet orally.**

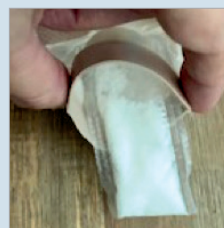
## HOW TO USE

There are 2 ways to insert the sachet into your pouch.

1. Insert whole sachet into the pouch opening prior to applying the pouch.



2. After emptying the pouch and cleaning the tail, insert the whole sachet up through the bottom.



No need to use when output is already thick!

# ABSORPTION GELLING SACHET

For help or advice please contact  
your Stomal Therapy Nurse or  
Omnigon Customer Service

AU **1800 819 274**  
NZ **0800 440 027**

info@omnigon.com.au  
www.omnigon.com.au