

OMNIGON



# PRODUCT CATALOGUE



0800 440 027

**B|BRAUN**

eakin® 

**Welland**  
Medical



OMNIGON  
SUPPORT GARMENTS



**OMNIGON**

Name .....

Hospital/Clinic .....

Your local Territory Manager is:

Attach your  
Territory Manager's  
card here

To place an order:

**Freecall 0800 440 027**

### Contact Customer Service

- Product samples
- New patient discharge kits
- General product information

**NZ 0800 440 027**

PO Box 24139, Royal Oak Auckland 1345 New Zealand

[info@omnigon.com.au](mailto:info@omnigon.com.au)

[www.omnigon.com.au](http://www.omnigon.com.au)



**OMNIGON**  
SUPPORT GARMENTS

# Quick Index

CODE	PAGE	CODE	PAGE	CODE	PAGE	CODE	PAGE
039901	107	44836	94	62080	99	839266	35
039901	108	44913	94	62140	96	839267	35
28300	94	44914	94	62150	97	839268	37
28300	95	44915	95	62160	98	839269	37
28300	108	44917	95	62180	99	839270	35
42715	92	44919	95	62240	96	839280	38
42716	92	44920	95	62280	99	839281	38
42717	93	44922	95	62550	97	839312	14
42718	93	4610125	87	62560	98	839336	14
42719	93	4610130	87	62680	99	839337	14
42720	93	4610135	87	621240	96	839338	14
42725	92	4610140	87	621241	96	839339	14
42726	93	4611115	87	621250	97	839340	14
42730	92	4611380	87	621251	97	839341	14
42731	93	4612115	87	621260	98	839342	14
42735	92	4612215	87	621261	98	839343	14
42740	92	4612380	87	839001	28	839344	14
42776	92	4620115	91	839002	28	839345	14
42815	92	4620125	91	839003	31	839346	14
42817	93	4620130	91	839004	31	839360	14
42818	93	4620135	91	839005	28	839401	12
42970	107	4620140	91	839006	28	839414	12
42971	107	4620215	91	839007	28	839415	12
44015	88	4620380	91	839010	31	839416	12
44018	89	4621115	91	839011	30	839417	12
44025	88	4621380	91	839012	30	839418	12
44030	88	4622115	91	839020	30	839419	12
44031	89	4622215	91	839023	29	839420	12
44035	88	4622380	91	839024	29	839421	12
44037	89	5028	109	839026	29	839422	12
44040	88	62040	96	839250	34	839423	12
44045	88	62050	97	839251	34	839424	12
44070	88	62052	97	839252	34	839425	12
44115	88	62060	98	839253	36	839438	12
44118	89	62062	98	839260	35	839489	15
44170	88	62063	98	839261	35	839500	15
44212	88	62064	98	839262	35	839501	15
44820	94	62066	98	839263	37	839502	15
44825	94	62067	98	839264	37	839503	15
44830	94	62069	98	839265	37	839504	15

CODE	PAGE	CODE	PAGE	CODE	PAGE	CODE	PAGE
839505	15	839703	23	840209	17	933065	105
839506	15	839706	23	840210	17	933080	106
839507	15	839707	22	840211	17	933155	103
839508	15	839800	24	840212	17	933165	105
839509	15	839801	24	840300	16	933180	106
839511	15	839802	24	840301	16	934045	101
839512	15	839803	24	840302	16	934055	103
839520	32	839804	24	840303	16	934065	105
839521	32	839805	24	840304	16	934145	101
839530	13	839806	24	840305	16	934155	103
839531	13	839807	24	840306	16	934165	105
839532	13	839808	24	840307	16	936415	100
839533	13	839809	26	840308	16	936420	100
839534	13	839810	26	840309	16	936425	100
839535	13	839811	26	840310	16	936430	100
839536	13	839812	26	840311	16	936515	102
839537	13	839820	24	840312	16	936535	102
839538	13	839821	24	840313	16	936540	102
839539	13	839822	24	840314	16	936615	104
839540	21	839823	24	840315	16	936645	104
839541	21	839824	24	841000NF	18	936815	106
839542	21	839825	24	841001NF	18	937415	100
839543	21	839826	24	931045	101	937425	100
839544	21	839827	24	931055	103	937515	102
839545	21	839828	24	931065	105	937530	102
839546	21	839829	24	931445	101	937615	104
839547	21	839830	26	931455	103	BOM101	117
839548	21	839900	25	931465	105	BOM102	117
839549	21	839901	25	931480	106	BOM103	117
839550	21	839902	25	931555	103	BOM104	117
839551	21	839903	25	931565	105	BOM105	117
839562	13	839904	25	931580	106	BOM110	117
839574	13	839905	25	932045	101	BOM201	117
839602	20	839920	27	932055	103	BOM202	117
839603	20	839921	27	932065	105	BOM203	117
839604	20	839922	27	932145	101	BOM204	117
839605	20	839923	27	932155	103	BOM205	117
839606	20	840200	17	932445	101	BOM210	117
839607	20	840201	17	932455	103	B-WBDP-1S-N	115
839608	20	840202	17	932465	105	B-WBDP-2M-B	115
839609	20	840203	17	932480	106	B-WBDP-2M-N	115
839610	20	840204	17	932545	101	B-WBDP-3L-B	115
839611	20	840205	17	932555	103	B-WBDP-3L-N	115
839612	20	840206	17	932565	105	B-WBDP-4X-N	115
839615	20	840207	17	932580	106	B-WBDP-5XX-N	115
839701	22	840208	17	933055	103	KKB401B	119

CODE	PAGE	CODE	PAGE	CODE	PAGE	CODE	PAGE
KKB401N	119	P-FD15-3L-B	114	X1C1A1229	49	X1D1A1335	59
KKB402B	119	P-FD15-3L-N	114	X1C1A1232	49	X1D1A1338	59
KKB402N	119	P-FD20-4X-B	114	X1C1A1235	49	X1D1A1344	59
KKB403B	119	P-FD20-4X-N	114	X1C1A1238	49	X1D1A13s	58
KKB403N	119	P-FD20-5XX-B	114	X1C1A1244	49	X1D1A21s	58
KKB404B	119	P-FD20-5XX-N	114	X1C1A12s	48	X1D1A2220	59
KKB404N	119	P-MD15-1S-B	113	X1C1A1320	49	X1D1A2225	59
KKB405B	119	P-MD15-2M-B	113	X1C1A1325	49	X1D1A2229	59
KKB405N	119	P-MD15-3L-B	113	X1C1A1329	49	X1D1A2232	59
KKB410N	119	P-MD20-4X-B	113	X1C1A1332	49	X1D1A2235	59
KKB501B	119	P-MD20-5XX-B	113	X1C1A1335	49	X1D1A2238	59
KKB501N	119	SPH201N	116	X1C1A1338	49	X1D1A2244	59
KKB502B	119	SPH202N	116	X1C1A1344	49	X1D1A22s	58
KKB502N	119	SPH203N	116	X1C1A13s	48	X1D1A2320	59
KKB503B	119	SPH204N	116	X1C1A21s	48	X1D1A2325	59
KKB503N	119	SPH205N	116	X1C1A2220	49	X1D1A2329	59
KKB504B	119	SPH206N	116	X1C1A2225	49	X1D1A2332	59
KKB504N	119	SPH207N	116	X1C1A2229	49	X1D1A2335	59
KKB505B	119	TCB701	118	X1C1A2232	49	X1D1A2338	59
KKB505N	119	TCB702	118	X1C1A2235	49	X1D1A2344	59
KKB510N	119	TCB703	118	X1C1A2238	49	X1D1A23s	58
KKB601B	119	TCB704	118	X1C1A2244	49	X1D1A32s	58
KKB601N	119	TCB705	118	X1C1A22s	48	X1D1A33s	58
KKB602B	119	TCB710	118	X1C1A2320	49	X1U1E12s	67
KKB602N	119	TCB801	118	X1C1A2325	49	X1U1E1320	67
KKB603B	119	TCB802	118	X1C1A2329	49	X1U1E1325	67
KKB603N	119	TCB803	118	X1C1A2332	49	X1U1E1329	67
KKB604B	119	TCB804	118	X1C1A2335	49	X1U1E1332	67
KKB604N	119	TCB805	118	X1C1A2338	49	X1U1E1335	67
KKB605B	119	TCB810	118	X1C1A2344	49	X1U1E1338	67
KKB605N	119	TCB901	118	X1C1A23s	48	X1U1E13s	67
KKB610N	119	TCB902	118	X1C1A32s	48	X1U1E22s	67
MSP801	112	TCB903	118	X1C1A33s	48	X1U1E2320	67
MSP802	112	TCB904	118	X1D1A11s	58	X1U1E2325	67
MSP803	112	TCB905	118	X1D1A1220	59	X1U1E2329	67
MSP803HW	112	TCB910	118	X1D1A1225	59	X1U1E2332	67
MSP804	112	WAB050	82	X1D1A1229	59	X1U1E2335	67
MSP804HW	112	WAD060	82	X1D1A1232	59	X1U1E2338	67
MSP805	112	WBF060	83	X1D1A1235	59	X1U1E23s	67
MSP805HW	112	WBF100	83	X1D1A1238	59	X1U1E32s	67
ND700	68	WBS050	83	X1D1A1244	59	X1U1E33s	67
ND700	81	WPP025	84	X1D1A12s	58	XBLTL01	81
P-FD15-1S-B	114	WSP100	84	X1D1A1320	59	XBLTS01	81
P-FD15-1S-N	114	X1C1A11s	48	X1D1A1325	59	XMH2C145	71
P-FD15-2M-B	114	X1C1A1220	49	X1D1A1329	59	XMH2C155	73
P-FD15-2M-N	114	X1C1A1225	49	X1D1A1332	59	XMH2C170	74

CODE	PAGE	CODE	PAGE	CODE	PAGE	CODE	PAGE
XMH2C445	71	XMH2UF413	75	XMHC DL932	57	XMHCSS13	40
XMH2C455	73	XMH2UF419	75	XMHC DL935	57	XMHCSS19	40
XMH2C545	71	XMH2UF422	75	XMHC DL938	57	XMHCSS22	40
XMH2C555	73	XMH2UF425	75	XMHC DL944	57	XMHCSS25	40
XMH2C570	74	XMH2UF429	75	XMHC DM313	56	XMHCSS29	40
XMH2D145	71	XMH2UF432	75	XMHC DM413	56	XMHCSS32	40
XMH2D155	73	XMH2UF435	75	XMHC DM513	56	XMHCSS35	40
XMH2D170	74	XMH2UF438	75	XMHC DM519	56	XMHCSS38	40
XMH2D445	71	XMH2UF513	76	XMHC DM522	56	XMHCSS44	40
XMH2D455	73	XMHC CL513	46	XMHC DM525	56	XMHCSS713	40
XMH2D545	71	XMHC CL532	46	XMHC DM529	56	XMHCUL513	66
XMH2D555	73	XMHC CL535	46	XMHC DM532	56	XMHCUL532	66
XMH2D570	74	XMHC CL538	46	XMHC DM535	56	XMHCUL535	66
XMH2F413	70	XMHC CL544	46	XMHC DM913	56	XMHCUL913	66
XMH2F419	70	XMHC CL913	46	XMHC DM919	56	XMHCUL932	66
XMH2F422	70	XMHC CL932	46	XMHC DM922	56	XMHCUL935	66
XMH2F425	70	XMHC CL935	46	XMHC DM925	56	XMHCUL938	66
XMH2F429	70	XMHC CL938	46	XMHC DM929	56	XMHCUM513	65
XMH2F432	70	XMHC CL944	46	XMHC DM932	56	XMHCUM519	65
XMH2F435	70	XMHC CLM413	45	XMHC DM935	56	XMHCUM522	65
XMH2F438	70	XMHC CM513	45	XMHC DS413	56	XMHCUM525	65
XMH2F513	72	XMHC CM519	45	XMHC DS513	56	XMHCUM529	65
XMH2F538	72	XMHC CM522	45	XMHC DS913	56	XMHCUM532	65
XMH2F544	72	XMHC CM525	45	XMHC DX113	57	XMHCUM535	65
XMH2F713	74	XMHC CM529	45	XMHC DX213	57	XMHCUM913	65
XMH2NF413	70	XMHC CM532	45	XMHC DX813	57	XMHCUM919	65
XMH2NF419	70	XMHC CM535	45	XMHCL513	40	XMHCUM922	65
XMH2NF422	70	XMHC CM913	45	XMHCL519	41	XMHCUM925	65
XMH2NF513	72	XMHC CM919	45	XMHCL522	41	XMHCUM929	65
XMH2NF525	72	XMHC CM922	45	XMHCL525	41	XMHCUM932	65
XMH2NF529	72	XMHC CM925	45	XMHCL529	41	XMHCUS513	64
XMH2NF532	72	XMHC CM929	45	XMHCL532	41	XMHCUS519	64
XMH2NF535	72	XMHC CM932	45	XMHCL535	41	XMHCUS522	64
XMH2NF713	74	XMHC CM935	45	XMHCL538	41	XMHCUS525	64
XMH2NUF413	75	XMHC CS413	45	XMHCL544	41	XMHCUS913	64
XMH2NUF419	75	XMHC CS513	45	XMHCL713	40	XMHCUS919	64
XMH2NUF422	75	XMHC CS913	45	XMHCM513	40	XMHCUS922	64
XMH2NUF513	76	XMHC CX213	46	XMHCM519	40	XMHCUS925	64
XMH2NUF525	76	XMHC CX813	46	XMHCM522	40	XMHDL513	50
XMH2NUF529	76	XMHC DL313	57	XMHCM525	40	XMHDL519	51
XMH2NUF532	76	XMHC DL513	57	XMHCM529	40	XMHDL522	51
XMH2NUF535	76	XMHC DL532	57	XMHCM532	40	XMHDL525	51
XMH2U145	75	XMHC DL535	57	XMHCM535	40	XMHDL529	51
XMH2U155	76	XMHC DL538	57	XMHCM538	40	XMHDL532	51
XMH2U545	75	XMHC DL544	57	XMHCM544	40	XMHDL535	51
XMH2U555	76	XMHC DL913	57	XMHCM713	40	XMHDL538	51

CODE	PAGE	CODE	PAGE	CODE	PAGE	CODE	PAGE
XMHDL544	51	XMHNCL538	44	XMHNDM522	53	XMHNUS513	61
XMHDL713	50	XMHNCL544	44	XMHNDM525	53	XMHNUS519	61
XMHDM513	50	XMHNCL913	44	XMHNDM529	53	XMHNUS522	61
XMHDM519	51	XMHNCL932	44	XMHNDM532	53	XMHNUS525	61
XMHDM522	51	XMHNCL935	44	XMHNDM535	53	XMHNUS913	61
XMHDM525	51	XMHNCL938	44	XMHNDM913	53	XMHNUS919	61
XMHDM529	51	XMHNCL944	44	XMHNDM919	53	XMHNUS922	61
XMHDM532	51	XMHNCLM413	43	XMHNDM922	53	XMHNUS925	61
XMHDM535	51	XMHNCLM513	43	XMHNDM925	53	XMHSS513	41
XMHDM538	51	XMHNCLM519	43	XMHNDM929	53	XMHSS535	41
XMHDM544	51	XMHNCLM522	43	XMHNDM932	53	XMHUL513	60
XMHDM713	50	XMHNCLM525	43	XMHNDM935	53	XMHUL519	60
XMHDS513	50	XMHNCLM529	43	XMHNDS413	52	XMHUL522	60
XMHDS519	50	XMHNCLM532	43	XMHNDS513	52	XMHUL525	60
XMHDS522	50	XMHNCLM535	43	XMHNDS519	52	XMHUL529	60
XMHDS525	50	XMHNCLM913	43	XMHNDS522	52	XMHUL532	60
XMHDS529	50	XMHNCLM919	43	XMHNDS525	52	XMHUL535	60
XMHDS532	50	XMHNCLM922	43	XMHNDS913	52	XMHUL538	60
XMHDS535	50	XMHNCLM925	43	XMHNDS919	52	XMHUL713	60
XMHDS538	50	XMHNCLM929	43	XMHNDS922	52	XMHUM513	60
XMHDS544	50	XMHNCLM932	43	XMHNDS925	52	XMHUM519	60
XMHDS713	50	XMHNCLM935	43	XMHNDX213	54	XMHUM522	60
XMHFL519	47	XMHNCLM413	42	XMHNDX813	54	XMHUM525	60
XMHFL525	47	XMHNCLM513	42	XMHNUL513	63	XMHUM529	60
XMHFL529	47	XMHNCLM519	42	XMHNUL532	63	XMHUM532	60
XMHFL532	47	XMHNCLM522	42	XMHNUL535	63	XMHUM535	60
XMHFL535	47	XMHNCLM525	42	XMHNUL538	63	XMHUM538	60
XMHFL538	47	XMHNCLM532	42	XMHNUL544	63	XMHUM713	60
XMHFL544	47	XMHNCLM535	42	XMHNUL913	63	XMHWA300	80
XMHFM519	47	XMHNCLM922	42	XMHNUL932	63	XMHWA310	80
XMHFM525	47	XMHNCLM925	42	XMHNUL935	63	XMHWA320	80
XMHFM529	47	XMHNCLM929	44	XMHNUL938	63	XMHWA330	80
XMHFM532	47	XMHNCLM813	44	XMHNULM513	62	XMHWA350	80
XMHFM535	47	XMHNCLM513	54	XMHNULM519	62	XMHWA400	80
XMHFM538	47	XMHNCLM532	54	XMHNULM522	62	XMHWAFH33	78
XMHFM544	47	XMHNCLM535	54	XMHNULM525	62	XMHWAFM33	78
XMHFSS519	47	XMHNCLM538	54	XMHNULM529	62	XUFWAFH33	79
XMHFSS525	47	XMHNCLM544	54	XMHNULM532	62	XWAFH33	78
XMHFSS529	47	XMHNCLM913	54	XMHNULM535	62	XWAFM33	78
XMHFSS532	47	XMHNCLM932	54	XMHNULM913	62		
XMHFSS535	47	XMHNCLM935	54	XMHNULM919	62		
XMHFSS538	47	XMHNCLM938	54	XMHNULM922	62		
XMHFSS544	47	XMHNCLM944	54	XMHNULM925	62		
XMHNCL513	44	XMHNCLM413	53	XMHNULM929	62		
XMHNCL532	44	XMHNCLM513	53	XMHNULM932	62		
XMHNCL535	44	XMHNCLM519	53	XMHNULM935	62		

## 1 Piece Closed

eakin® Pelican Pouches™ Flat / Convex 12

## 1 Piece Drainable

eakin® Pelican Pouches™ Flat / Convex 14

eakin dot® Flat / Convex / High Output 16

## 1 Piece Urostomy

eakin® Pelican Pouches™ Flat / Convex 20

## 1 Piece Paediatric and Neonatal

eakin® Pelican Pouches™ Paediatric Flat / Convex 22

eakin® Pelican Pouches™ Neonatal Flat 23

## 2 Piece

eakin dot® - 60mm, 80mm 24

## Accessories

eakin Release™ Adhesive Remover 29

eakin Protect™ Barrier Film 29

eakin Perform™ Solidifying Agent 30

eakin® Pelican Belt 32

eakin **Cohesive**® Seals 28

eakin Surround® Skin Protector 30

eakin **Cohesive**® Skin Barriers 31

eakin **Cohesive**® Paste 31

eakin freeseal® Seal 28

## Wound Pouches

eakin Wound Pouches™ 34

eakin Access Windows™ 38



## 1 Piece Closed

Welland Aurum® with Manuka honey Flat / Convex	40
Welland Aurum® Profile with Manuka honey	45
Welland Aurum® Xtra with Manuka honey Flat	47
Welland Aurum® Plus with Manuka honey Flat	48

## 1 Piece Drainable

Welland Aurum® with Manuka honey Flat / Convex	50
Welland Aurum® Profile with Manuka honey	56
Welland Aurum® Plus with Manuka honey Flat	58

## 1 Piece Urostomy

Welland Aurum® with Manuka honey Flat / Convex	60
Welland Aurum® Profile with Manuka honey	64
Welland Aurum® Plus with Manuka honey Flat	67
Welland Night Drainage Bag	68

## 2 Piece

Welland Aurum® 2 with Manuka honey - 45mm, 55mm, 70mm	70
---	----

## Accessories

Welland Hydroframe® with Manuka honey	78
Welland Hydroframe®	78
Welland Ultraframe®	79
Welland Hyperseal® Washers with Manuka honey	80
Welland One Piece Belt	81
Welland Night Drainage Bag	81
Welland Adhesive Remover	82
Welland Barrier Film	83
Welland Stoma Powder	84
Welland Stoma Paste	84

## 1 Piece Closed

B Braun® Flexima® Active Flat	87
B Braun® Flexima® Flat / Convex	88

## 1 Piece Drainable

B Braun® Flexima® Active Flat	91
B Braun® Flexima® Flat / Convex	92

## 1 Piece Urostomy

B Braun® Flexima® Uro Silk Flat / Convex	94
--	----

## 2 Piece

B Braun® Flexima® Key - 40mm, 50mm, 60mm, 80mm	96
B Braun® Flexima® 3S - 45mm, 55mm, 65mm, 80mm	100
B Braun® Flexima® High Flow Pouch and Collector	107

## Accessories

B Braun® High Flow Collector	108
B Braun® Urimed Overnight Bag	108
B Braun® Stoma Care Belt	109



## Support Garments

How to measure for a support garment 111

### Support Garments – Rating 3 Moderate Support

Men's Support Pants 112

Diamond Plus Unisex Boxers 113

Diamond Plus Briefs 114

Diamond Plus Support Waistbands 115

### Support Garments – Rating 4 Intermediate Support

Support Briefs For Her 116

IsoFlex Support Belts 117

### Support Garments – Rating 5 Firm Support

Total Control Support Belts 118

KoolKnit Support Belts 119

## Terms & Conditions

1. Ordering and General Queries 120
2. Terms 120
3. Quantities and Pricing 120
4. Product returns 121
5. Condition of Return 121

**Notes** 122

# eakin® Pelican Pouches™ Closed - Flat

Proven reliable hypoallergenic skin barrier.

Pack size  
**30**

CODE	DESCRIPTION	VOLUME
<b>CUT-TO-FIT</b>		
839438	Mini Split Fabric 20-65mm	180ml
839414	Midi Split Fabric 20-65mm	460ml
839401	Maxi Split Fabric 20-65mm	530ml
<b>PRECUT</b>		
839415	Midi Split Fabric 22.5mm	375ml
839416	Midi Split Fabric 25mm	375ml
839417	Midi Split Fabric 27.5mm	375ml
839418	Midi Split Fabric 30mm	375ml
839419	Midi Split Fabric 32.5mm	375ml
839420	Midi Split Fabric 35mm	375ml
839421	Midi Split Fabric 37.5mm	375ml
839422	Midi Split Fabric 40mm	375ml
839423	Midi Split Fabric 45mm	375ml
839424	Midi Split Fabric 50mm	375ml
839425	Midi Split Fabric 55mm	375ml



# eakin® Pelican Pouches™ Closed - Convex

The original and still the softest convexity.

Pack size  
**10**

CODE	DESCRIPTION	VOLUME
<b>CUT-TO-FIT</b>		
839530	Midi Split Fabric 12-40mm	375ml
839574	Midi Split Fabric 15-60mm	400ml
839562	Maxi Split Fabric 12-40mm	530ml
<b>PRECUT</b>		
839531	Midi Split Fabric 20mm	375ml
839532	Midi Split Fabric 22.5mm	375ml
839533	Midi Split Fabric 25mm	375ml
839534	Midi Split Fabric 27.5mm	375ml
839535	Midi Split Fabric 30mm	375ml
839536	Midi Split Fabric 32.5mm	375ml
839537	Midi Split Fabric 35mm	375ml
839538	Midi Split Fabric 37.5mm	375ml
839539	Midi Split Fabric 40mm	375ml



# eakin® Pelican Pouches™ Drainable - Flat

Proven reliable hypoallergenic skin barrier.

Pack size  
**30**

CODE	DESCRIPTION	VOLUME
<b>CUT-TO-FIT</b>		
839360	Mini Split Fabric 15-65mm	300ml
839336	Midi Split Fabric 15-65mm	400ml
839312	Maxi Split Fabric 15-65mm	600ml
<b>PRECUT</b>		
839337	Midi Split Fabric 20mm	400ml
839338	Midi Split Fabric 25mm	400ml
839339	Midi Split Fabric 27.5mm	400ml
839340	Midi Split Fabric 30mm	400ml
839341	Midi Split Fabric 32.5mm	400ml
839342	Midi Split Fabric 35mm	400ml
839343	Midi Split Fabric 37.5mm	400ml
839344	Midi Split Fabric 40mm	400ml
839345	Midi Split Fabric 45mm	400ml
839346	Midi Split Fabric 50mm	400ml



# eakin® Pelican Pouches™ Drainable - Convex

The original and still the softest convexity.

Pack size  
10

CODE	DESCRIPTION	VOLUME
<b>CUT-TO-FIT</b>		
839511	Mini Split Fabric 12-40mm	300ml
839500	Midi Split Fabric 12-40mm	400ml
839512	Midi Split Fabric 15-60mm	400ml
839489	Maxi Split Fabric 12-40mm	600ml
<b>PRECUT</b>		
839501	Midi Split Fabric 20mm	400ml
839502	Midi Split Fabric 22.5mm	400ml
839503	Midi Split Fabric 25mm	400ml
839504	Midi Split Fabric 27.5mm	400ml
839505	Midi Split Fabric 30mm	400ml
839506	Midi Split Fabric 32.5mm	400ml
839507	Midi Split Fabric 35mm	400ml
839508	Midi Split Fabric 37.5mm	400ml
839509	Midi Split Fabric 40mm	400ml



# eakin dot® Drainable - Flat

A pouch that stays on securely, for longer, with skinsmart™ hydrocolloid that keeps peristomal skin healthy.

Pack size  
**30**

CODE	POUCH SIZE		APERTURE SIZE	VOLUME
<b>CUT-TO-FIT</b>				
840300	Mini	Split Fabric	15-55mm	430ml
840301	Midi	Split Fabric	15-55mm	500ml
840302	Maxi	Split Fabric	15-55mm	640ml
840303	Maxi	Split Fabric	15-70mm	600ml
<b>PRECUT</b>				
840304	Midi	Split Fabric	20mm	500ml
840305	Midi	Split Fabric	22.5mm	500ml
840306	Midi	Split Fabric	25mm	500ml
840307	Midi	Split Fabric	27.5mm	500ml
840308	Midi	Split Fabric	30mm	500ml
840309	Midi	Split Fabric	32.5mm	500ml
840310	Midi	Split Fabric	35mm	500ml
840311	Midi	Split Fabric	37.5mm	500ml
840312	Midi	Split Fabric	40mm	500ml
840313	Midi	Split Fabric	45mm	500ml
840314	Midi	Split Fabric	50mm	500ml
840315	Midi	Split Fabric	55mm	500ml





# eakin dot® Drainable - Convex

A pouch that stays on securely, for longer, with skinsmart™ hydrocolloid that keeps peristomal skin healthy.

Pack size  
10

CODE	POUCH SIZE		APERTURE SIZE	VOLUME
<b>CUT-TO-FIT</b>				
840200	Mini	Split Fabric	15-40mm	445ml
840201	Midi	Split Fabric	15-40mm	490ml
840202	Maxi	Split Fabric	15-40mm	710ml
840203	Maxi	Split Fabric	15-60mm	675ml
<b>PRECUT</b>				
840204	Midi	Split Fabric	20mm	490ml
840205	Midi	Split Fabric	22.5mm	490ml
840206	Midi	Split Fabric	25mm	490ml
840207	Midi	Split Fabric	27.5mm	490ml
840208	Midi	Split Fabric	30mm	490ml
840209	Midi	Split Fabric	32.5mm	490ml
840210	Midi	Split Fabric	35mm	490ml
840211	Midi	Split Fabric	37.5mm	490ml
840212	Midi	Split Fabric	40mm	490ml



# eakin dot® Drainable - Soft Convex High Output

A pouch that stays on securely, for longer, with skinsmart™ hydrocolloid that keeps peristomal skin healthy. The wide outlet fits all drainage tubing, including Braun High Flow collector (039901).

Pack size  
10

CODE	DESCRIPTION	VOLUME
<b>CUT-TO-FIT</b>		
841000NF	High Output 12-40mm	740ml
841001NF	High Output 15-60mm	750ml





# eakin® Pelican Pouches™

## Urostomy - Flat

Proven reliable hypoallergenic skin barrier. Compatible for use with either the Welland Night Drainage Bag (ND700) or Braun Urimed Overnight Bag (28300).

Pack size  
**30**

CODE	DESCRIPTION	VOLUME
<b>CUT-TO-FIT</b>		
839615	Mini Split Fabric 15-65mm	290ml
839603	Midi Split Fabric 15-65mm	510ml
839602	Maxi Split Fabric 15-65mm	850ml
<b>PRECUT</b>		
839604	Midi Split Fabric 20mm	510ml
839605	Midi Split Fabric 25mm	510ml
839606	Midi Split Fabric 27.5mm	510ml
839607	Midi Split Fabric 30mm	510ml
839608	Midi Split Fabric 32.5mm	510ml
839609	Midi Split Fabric 35mm	510ml
839610	Midi Split Fabric 37.5mm	510ml
839611	Midi Split Fabric 40mm	510ml
839612	Midi Split Fabric 45mm	510ml



# eakin® Pelican Pouches™

## Urostomy - Convex

The original and still the softest convexity. Compatible for use with either the Welland Night Drainage Bag (ND700) or Braun Urimed Overnight Bag (28300)

Pack size  
**10**

CODE	DESCRIPTION	VOLUME
<b>CUT-TO-FIT</b>		
839551	Mini Split Fabric 12-40mm	290ml
839540	Midi Split Fabric 12-40mm	510ml
839550	Maxi Split Fabric 12-40mm	850ml
<b>PRECUT</b>		
839541	Midi Split Fabric 20mm	510ml
839542	Midi Split Fabric 22.5mm	510ml
839543	Midi Split Fabric 25mm	510ml
839544	Midi Split Fabric 27.5mm	510ml
839545	Midi Split Fabric 30mm	510ml
839546	Midi Split Fabric 32.5mm	510ml
839547	Midi Split Fabric 35mm	510ml
839548	Midi Split Fabric 37.5mm	510ml
839549	Midi Split Fabric 40mm	510ml



# eakin® Pelican Pouches™ Paediatric – Drainable

The original and still the softest convexity.

CODE	DESCRIPTION	PACK SIZE	VOLUME
<b>FLAT</b>			
839701	Split Fabric CTF 10-50mm	30	275ml
<b>CONVEX</b>			
839707	Split Fabric CTF 5-30mm	10	275ml



## eakin® Pelican Pouches™ Paediatric Urostomy - Flat

CODE	DESCRIPTION	PACK SIZE	VOLUME
839706	Split Fabric CTF 10-50mm*	30	200ml



## eakin® Pelican Pouches™ Neonatal Drainable - Flat

CODE	DESCRIPTION	PACK SIZE	VOLUME
839703	Split Fabric CTF 0-40mm	30	125ml



\*Compatible for use with the Braun Urimed Overnight Bag (28300)

# eakin dot® - Baseplate Ring size 60mm

skinsmart™ longer life hydrocolloid with pop up floating flange.

CODE	DESCRIPTION	PACK SIZE
<b>FLAT</b>		
839800	Baseplate CTF 15-37.5mm	5
839801	Baseplate 20mm	5
839802	Baseplate 22.5mm	5
839803	Baseplate 25mm	5
839804	Baseplate 27.5mm	5
839805	Baseplate 30mm	5
839806	Baseplate 32.5mm	5
839807	Baseplate 35mm	5
839808	Baseplate 37.5mm	5
<b>CONVEX</b>		
839820	Baseplate CTF 15-40mm	5
839821	Baseplate 20mm	5
839822	Baseplate 22.5mm	5
839823	Baseplate 25mm	5
839824	Baseplate 27.5mm	5
839825	Baseplate 30mm	5
839826	Baseplate 32.5mm	5
839827	Baseplate 35mm	5
839828	Baseplate 37.5mm	5
839829	Baseplate 40mm	5





# eakin dot® - Pouch Ring size 60mm

skinsmart™ longer life hydrocolloid with pop up floating flange.

CODE	DESCRIPTION	PACK SIZE	VOLUME
<b>CLOSED</b>			
839900	Mini Split Fabric	30	250ml
839901	Midi Split Fabric	30	440ml
839902	Maxi Split Fabric	30	560ml
<b>DRAINABLE</b>			
839903	Mini Split Fabric	30	330ml
839904	Midi Split Fabric	30	410ml
839905	Maxi Split Fabric	30	620ml



# eakin dot® - Baseplate Ring size 80mm

skinsmart™ longer life hydrocolloid with pop up floating flange.

CODE	DESCRIPTION	PACK SIZE
<b>FLAT</b>		
839809	Baseplate CTF 15-50mm	5
839810	Baseplate 40mm	5
839811	Baseplate 45mm	5
839812	Baseplate 50mm	5
<b>CONVEX</b>		
839830	Baseplate CTF 15-60mm	5



# eakin dot® - Pouch Ring size 80mm

skinsmart™ longer life hydrocolloid with pop up floating flange.

CODE	DESCRIPTION	PACK SIZE	VOLUME
<b>CLOSED</b>			
839920	Midi Split Fabric	30	460ml
839921	Maxi Split Fabric	30	540ml
<b>DRAINABLE</b>			
839922	Midi Split Fabric	30	450ml
839923	Maxi Split Fabric	30	620ml



## eakin Cohesive® Seals

Most absorbent seal forms a protective gel to dilute harmful enzymes and maintain a neutral pH and physically block irritants.

CODE	DESCRIPTION	PACK SIZE
839001	Large 98mm - 2.1mm thick	10
839002	Small 48mm - 4.2mm thick	30
839005	Slims 48mm - 2.8mm thick	30
839006	Stoma Wrap 85mm - 3mm thick	10



## eakin freeseal®

Your first responder for convex pouches and oval stomas. For added protection without added depth.

CODE	DESCRIPTION	PACK SIZE
839007	Width 48mm - 1.8mm thick	10



## eakin Release™ Adhesive Remover

Silicone based adhesive remover - eakin release™ offers rapid, pain-free removal of your pouch and other adhesive dressings.

CODE	DESCRIPTION	PACK SIZE	VOLUME
839024	Wipes	30	-
839023	Spray	1	50ml



## eakin Protect™ Barrier Film

Silicone based barrier film - eakin protect™ creates an optimal pouching surface and provides complete skin protection from harmful bodily fluids, excoriation and harsh medical adhesives.

CODE	DESCRIPTION	PACK SIZE	VOLUME
839026	Spray	1	50ml



# eakin Perform™ Solidifying Agent

eakin perform™ is designed to help ileostomates and those with high output stomas get back to or start an active lifestyle, or get a good night's sleep.

CODE	DESCRIPTION	PACK SIZE	VOLUME
839020	Perform™ Sachets	60	2g



# eakin Surround® Skin Protector

eakin **Cohesive**® skin barrier formulation to be used around drainage tubes (e.g. PEG).

CODE	DESCRIPTION	PACK SIZE
839011	Surround Large 98mm	10
839012	Surround Small 58mm	20



## eakin Cohesive® Skin Barriers

Can be used with wound pouches to prevent leakage and increase pouch wear time.

CODE	DESCRIPTION	PACK SIZE
839003	Skin Barrier 10 x 20cm	5
839004	Skin Barrier 10 x 10cm	5



## eakin Cohesive® Paste

eakin **Cohesive**® paste is an alcohol-free, no sting adhesive paste and a skin friendly filler for effective protection against leakage.

CODE	DESCRIPTION	PACK SIZE	VOLUME
839010	Paste Tube	1	60g



## eakin® Pelican Belt

CODE	DESCRIPTION	PACK SIZE
839520	Belt 45-130cm	1
839521	Belt 100-200cm	1







## eakin Oval Wound Pouch™ - Fold & Tuck Closure

eakin **Cohesive**® skin barrier formulation on all wound pouches ensures maximum skin protection.

CODE	DESCRIPTION	PACK SIZE	VOLUME
839250	Small Pouch Fold / Tuck 45 x 30mm	10	190ml
839251	Medium Pouch Fold / Tuck 110 x 75mm*	10	670ml
839252	Large Pouch Fold / Tuck 175 x 110mm**	10	1190ml



eakin Small Access Windows™ can be applied to all pouches marked with \* or \*\*  
eakin Large Access Windows™ can be applied to all pouches marked with \*\*

# eakin Oval Wound Pouch™ - Bung Closure

eakin **Cohesive**® skin barrier formulation on all wound pouches ensures maximum skin protection.

CODE	DESCRIPTION	PACK SIZE	VOLUME
839260	Small Pouch Bung 45 x 30mm	10	190ml
839267	Small Plus Pouch Bung 86 x 60mm*	10	180ml
839261	Medium Pouch Bung 110 x 75mm*	10	670ml
839262	Large Pouch Bung 175 x 110mm**	10	1190ml
839266	Extra Large Pouch Bung 290 x 130mm (vertical incision wounds)**	5	1780ml
839270	Midline Pouch Bung 250 x 80mm (vertical incision wounds)**	5	1100ml



# eakin Rectangle Wound Pouch™ - Fold & Tuck Closure

eakin **Cohesive**® skin barrier formulation on all wound pouches ensures maximum skin protection.

CODE	DESCRIPTION	PACK SIZE	VOL.
839253	Extra Large Pouch Fold/Tuck 245 x 160mm**	5	3240ml

839253



\*\*eakin Small or Large Access Windows™ can be applied to pouch

# eakin Rectangle Wound Pouch™ - Bung Closure

eakin **Cohesive**® skin barrier formulation on all wound pouches ensures maximum skin protection.

CODE	DESCRIPTION	PACK SIZE	VOL.
839263	Extra Large Pouch Bung 245 x 160mm (horizontal wounds)**	5	3240ml
839264	Extra Large Pouch Bung & access window 245 x 160mm (horizontal wounds)	5	3240ml
839265	Extra Large Pouch Bung 245 x 160mm (vertical wounds)**	5	3240ml
839268	Extra Large Pouch Bung & access window 245 x 160mm (vertical wounds)	5	3260ml
839269	Maxi Pouch 2 x Bung closure 250 x 385mm (horizontal wounds)**	1	8250ml



eakin Small Access Windows™ can be applied to all pouches marked with \* or \*\*  
eakin Large Access Windows™ can be applied to all pouches marked with \*\*

# eakin Access Windows™

Access windows can be applied to marked pouches.

CODE	DESCRIPTION	PACK SIZE
839281	Small Access Window 60 x 60mm	5
839280	Large Access Window 125 x 75mm	5

839281



839280





# Welland Aurum® with Manuka honey Closed - Flat

1<sup>st</sup> line defence in maintaining peristomal skin integrity.

Pack size  
**30**

CODE	DESCRIPTION	VOLUME
<b>CUT-TO-FIT</b>		
XMHCS513	Mini Split Fabric 13-70mm	195ml
XMHCS713	Mini Clear 13-70mm	195ml
XMHCM513	Midi Split Fabric 13-80mm	295ml
XMHCM713	Midi Clear 13-80mm	295ml
XMHCL513	Maxi Split Fabric 13-80mm	445ml
XMHCL713	Maxi Clear 13-80mm	445ml
<b>PRECUT</b>		
XMHCS519	Mini Split Fabric 19mm	195ml
XMHCS522	Mini Split Fabric 22mm	195ml
XMHCS525	Mini Split Fabric 25mm	195ml
XMHCS529	Mini Split Fabric 29mm	195ml
XMHCS532	Mini Split Fabric 32mm	195ml
XMHCS535	Mini Split Fabric 35mm	195ml
XMHCS538	Mini Split Fabric 38mm	195ml
XMHCS544	Mini Split Fabric 44mm	195ml
XMHCM519	Midi Split Fabric 19mm	295ml
XMHCM522	Midi Split Fabric 22mm	295ml
XMHCM525	Midi Split Fabric 25mm	295ml
XMHCM529	Midi Split Fabric 29mm	295ml
XMHCM532	Midi Split Fabric 32mm	295ml
XMHCM535	Midi Split Fabric 35mm	295ml
XMHCM538	Midi Split Fabric 38mm	295ml
XMHCM544	Midi Split Fabric 44mm	295ml





# Welland Aurum® with Manuka honey Closed - Flat

1<sup>st</sup> line defence in maintaining peristomal skin integrity.

Pack size  
**30**

CODE	DESCRIPTION	VOLUME
<b>PRECUT</b>		
XMHCL519	Maxi Split Fabric 19mm	445ml
XMHCL522	Maxi Split Fabric 22mm	445ml
XMHCL525	Maxi Split Fabric 25mm	445ml
XMHCL529	Maxi Split Fabric 29mm	445ml
XMHCL532	Maxi Split Fabric 32mm	445ml
XMHCL535	Maxi Split Fabric 35mm	445ml
XMHCL538	Maxi Split Fabric 38mm	445ml
XMHCL544	Maxi Split Fabric 44mm	445ml
<b>STOMA CAP</b>		
XMHSS513	Tan CTF 13-50mm	10ml
XMHSS535	Tan 35mm	10ml



# Welland Aurum® with Manuka honey Closed - Convex

1<sup>st</sup> line defence in maintaining peristomal skin integrity with fully soft flexible convexity.

Pack size  
**10**

CODE	DESCRIPTION	VOLUME
<b>25MM PLATEAU SIZE – CUT-TO-FIT</b>		
XMHNCS413	Mini Split Fabric 13-25mm	150ml
XMHNCS513	Midi Split Fabric 13-25mm	250ml
XMHNCS913	Maxi Split Fabric 13-25mm	360ml
<b>25MM PLATEAU SIZE – PRECUT</b>		
XMHNCS519	Midi Split Fabric 19mm	250ml
XMHNCS522	Midi Split Fabric 22mm	250ml
XMHNCS525	Midi Split Fabric 25mm	250ml
XMHNCS919	Maxi Split Fabric 19mm	360ml
XMHNCS922	Maxi Split Fabric 22mm	360ml
XMHNCS925	Maxi Split Fabric 25mm	360ml



# Welland Aurum® with Manuka honey Closed - Convex

1<sup>st</sup> line defence in maintaining peristomal skin integrity with fully soft flexible convexity.

Pack size  
**10**

CODE	DESCRIPTION	VOLUME
------	-------------	--------

## 35MM PLATEAU SIZE – CUT-TO-FIT

XMHNCM413	Mini Split Fabric 13-35mm	150ml
XMHNCM513	Midi Split Fabric 13-35mm	250ml
XMHNCM913	Maxi Split Fabric 13-35mm	360ml

## 35MM PLATEAU SIZE – PRECUT

XMHNCM519	Midi Split Fabric 19mm	250ml
XMHNCM522	Midi Split Fabric 22mm	250ml
XMHNCM525	Midi Split Fabric 25mm	250ml
XMHNCM529	Midi Split Fabric 29mm	250ml
XMHNCM532	Midi Split Fabric 32mm	250ml
XMHNCM535	Midi Split Fabric 35mm	250ml
XMHNCM919	Maxi Split Fabric 19mm	360ml
XMHNCM922	Maxi Split Fabric 22mm	360ml
XMHNCM925	Maxi Split Fabric 25mm	360ml
XMHNCM929	Maxi Split Fabric 29mm	360ml
XMHNCM932	Maxi Split Fabric 32mm	360ml
XMHNCM935	Maxi Split Fabric 35mm	360ml



# Welland Aurum® with Manuka honey Closed - Convex

1<sup>st</sup> line defence in maintaining peristomal skin integrity with fully soft flexible convexity.

Pack size  
**10**

CODE	DESCRIPTION	VOLUME
<b>48MM PLATEAU SIZE – CUT-TO-FIT</b>		
XMHNCL513	Midi Split Fabric 13-48mm	250ml
XMHNCL913	Maxi Split Fabric 13-48mm	360ml
<b>48MM PLATEAU SIZE – PRECUT</b>		
XMHNCL532	Midi Split Fabric 32mm	250ml
XMHNCL535	Midi Split Fabric 35mm	250ml
XMHNCL538	Midi Split Fabric 38mm	250ml
XMHNCL544	Midi Split Fabric 44mm	250ml
XMHNCL932	Maxi Split Fabric 32mm	360ml
XMHNCL935	Maxi Split Fabric 35mm	360ml
XMHNCL938	Maxi Split Fabric 38mm	360ml
XMHNCL944	Maxi Split Fabric 44mm	360ml
<b>60MM PLATEAU SIZE – CUT-TO-FIT</b>		
XMHNCX813	Midi Plus Split Fabric 13-60mm	250ml
XMHNCX213	Maxi Plus Split Fabric 13-60mm	360ml

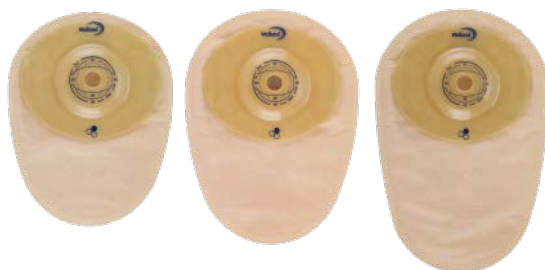


# Welland Aurum® Profile with Manuka honey Closed

Soft and mouldable 3D skin barrier for hernias, curves and creases.

Pack size  
**10**

CODE	DESCRIPTION	VOLUME
<b>25MM PLATEAU SIZE – CUT-TO-FIT</b>		
XMHCCS413	Mini Split Fabric 13-25mm	150ml
XMHCCS513	Midi Split Fabric 13-25mm	250ml
XMHCCS913	Maxi Split Fabric 13-25mm	360ml
<b>35MM PLATEAU SIZE – CUT-TO-FIT</b>		
XMHCCM413	Mini Split Fabric 13-35mm	150ml
XMHCCM513	Midi Split Fabric 13-35mm	250ml
XMHCCM913	Maxi Split Fabric 13-35mm	360ml
<b>35MM PLATEAU SIZE – PRECUT</b>		
XMHCCM519	Midi Split Fabric 19mm	250ml
XMHCCM522	Midi Split Fabric 22mm	250ml
XMHCCM525	Midi Split Fabric 25mm	250ml
XMHCCM529	Midi Split Fabric 29mm	250ml
XMHCCM532	Midi Split Fabric 32mm	250ml
XMHCCM535	Midi Split Fabric 35mm	250ml
XMHCCM919	Maxi Split Fabric 19mm	360ml
XMHCCM922	Maxi Split Fabric 22mm	360ml
XMHCCM925	Maxi Split Fabric 25mm	360ml
XMHCCM929	Maxi Split Fabric 29mm	360ml
XMHCCM932	Maxi Split Fabric 32mm	360ml
XMHCCM935	Maxi Split Fabric 35mm	360ml



# Welland Aurum® Profile With Manuka honey Closed

Soft and mouldable 3D skin barrier for hernias, curves and creases.

Pack size  
10

CODE	DESCRIPTION	VOLUME
------	-------------	--------

## 48MM PLATEAU SIZE – CUT-TO-FIT

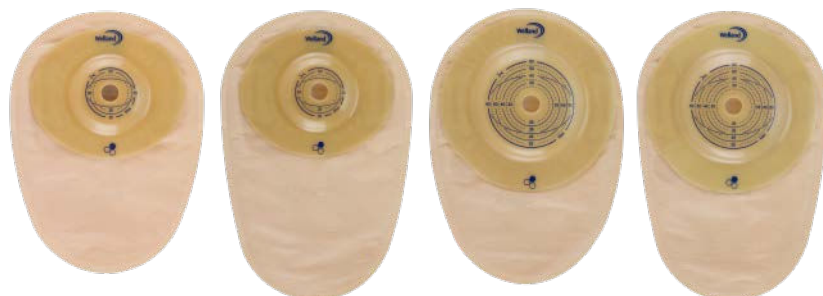
XMHCCL513	Midi Split Fabric 13-48mm	250ml
XMHCCL913	Maxi Split Fabric 13-48mm	360ml

## 48MM PLATEAU SIZE – PRECUT

XMHCCL532	Midi Split Fabric 32mm	250ml
XMHCCL535	Midi Split Fabric 35mm	250ml
XMHCCL538	Midi Split Fabric 38mm	250ml
XMHCCL544	Midi Split Fabric 44mm	250ml
XMHCCL932	Maxi Split Fabric 32mm	360ml
XMHCCL935	Maxi Split Fabric 35mm	360ml
XMHCCL938	Maxi Split Fabric 38mm	360ml
XMHCCL944	Maxi Split Fabric 44mm	360ml

## 60MM PLATEAU SIZE – CUT-TO-FIT

XMHCX813	Midi Plus Split Fabric 13-60mm	250ml
XMHCX213	Maxi Plus Split Fabric 13-60mm	360ml



# Welland Aurum® Xtra with Manuka honey Closed - Flat

Biodegradable materials in inner liner and baseplate. The inner liner and flange of Aurum® Xtra are flushable in Australia in septic tanks, airplane and vacuum extraction systems and portable toilets.

Pack size  
**30**

CODE	DESCRIPTION	VOLUME
<b>CUT-TO-FIT</b>		
XMHFS519	Mini Tan 19-50mm	60ml
XMHFM519	Midi Tan 19-50mm	110ml
XMHFL519	Maxi Tan 19-50mm	200ml
<b>PRECUT</b>		
XMHFS525	Mini Tan 25mm	60ml
XMHFS529	Mini Tan 29mm	60ml
XMHFS532	Mini Tan 32mm	60ml
XMHFS535	Mini Tan 35mm	60ml
XMHFS538	Mini Tan 38mm	60ml
XMHFS544	Mini Tan 44mm	60ml
XMHFM525	Midi Tan 25mm	110ml
XMHFM529	Midi Tan 29mm	110ml
XMHFM532	Midi Tan 32mm	110ml
XMHFM535	Midi Tan 35mm	110ml
XMHFM538	Midi Tan 38mm	110ml
XMHFM544	Midi Tan 44mm	110ml
XMHFL525	Maxi Tan 25mm	200ml
XMHFL529	Maxi Tan 29mm	200ml
XMHFL532	Maxi Tan 32mm	200ml
XMHFL535	Maxi Tan 35mm	200ml
XMHFL538	Maxi Tan 38mm	200ml
XMHFL544	Maxi Tan 44mm	200ml



# Welland Aurum® Plus Closed - Flat

Stoma pouches designed around what you value. Choice, independence, healthy skin and leak-free days. A sleek design, soft and water repellent material, and split back cover.

Pack size  
**30**

CODE	POUCH SIZE	COLOUR	APERTURE SIZE	VOLUME
------	------------	--------	---------------	--------

## CUT-TO-FIT

X1C1A11s	Mini	Black	13-70mm	200ml
X1C1A21s	Mini	Sand	13-70mm	200ml
X1C1A12s	Midi	Black	13-80mm	350ml
X1C1A22s	Midi	Sand	13-80mm	350ml
X1C1A32s	Midi	Clear	13-80mm	350ml
X1C1A13s	Maxi	Black	13-80mm	550ml
X1C1A23s	Maxi	Sand	13-80mm	550ml
X1C1A33s	Maxi	Clear	13-80mm	550ml





# Welland Aurum® Plus

## Closed - Flat

Stoma pouches designed around what you value. Choice, independence, healthy skin and leak-free days. A sleek design, soft and water repellent material, and split back cover.

**Pack size**  
**30**

CODE	POUCH SIZE	COLOUR	APERTURE SIZE	VOLUME
<b>PRECUT</b>				
X1C1A1220	Midi	Black	20mm	350ml
X1C1A1225	Midi	Black	25mm	350ml
X1C1A1229	Midi	Black	29mm	350ml
X1C1A1232	Midi	Black	32mm	350ml
X1C1A1235	Midi	Black	35mm	350ml
X1C1A1238	Midi	Black	38mm	350ml
X1C1A1244	Midi	Black	44mm	350ml
X1C1A2220	Midi	Sand	20mm	350ml
X1C1A2225	Midi	Sand	25mm	350ml
X1C1A2229	Midi	Sand	29mm	350ml
X1C1A2232	Midi	Sand	32mm	350ml
X1C1A2235	Midi	Sand	35mm	350ml
X1C1A2238	Midi	Sand	38mm	350ml
X1C1A2244	Midi	Sand	44mm	350ml
X1C1A1320	Maxi	Black	20mm	550ml
X1C1A1325	Maxi	Black	25mm	550ml
X1C1A1329	Maxi	Black	29mm	550ml
X1C1A1332	Maxi	Black	32mm	550ml
X1C1A1335	Maxi	Black	35mm	550ml
X1C1A1338	Maxi	Black	38mm	550ml
X1C1A1344	Maxi	Black	44mm	550ml
X1C1A2320	Maxi	Sand	20mm	550ml
X1C1A2325	Maxi	Sand	25mm	550ml
X1C1A2329	Maxi	Sand	29mm	550ml
X1C1A2332	Maxi	Sand	32mm	550ml
X1C1A2335	Maxi	Sand	35mm	550ml
X1C1A2338	Maxi	Sand	38mm	550ml
X1C1A2344	Maxi	Sand	44mm	550ml

# Welland Aurum® with Manuka honey Drainable - Flat

1<sup>st</sup> line defence in maintaining peristomal skin integrity.

Pack size  
**30**

CODE	DESCRIPTION	VOLUME
<b>CUT-TO-FIT</b>		
XMHDS513	Mini Split Fabric 13-70mm	210ml
XMHDS713	Mini Clear 13-70mm	210ml
XMHDM513	Midi Split Fabric 13-80mm	350ml
XMHDM713	Midi Clear 13-80mm	350ml
XMHDL513	Maxi Split Fabric 13-80mm	555ml
XMHDL713	Maxi Clear 13-80mm	555ml
<b>PRECUT</b>		
XMHDS519	Mini Split Fabric 19mm	210ml
XMHDS522	Mini Split Fabric 22mm	210ml
XMHDS525	Mini Split Fabric 25mm	210ml
XMHDS529	Mini Split Fabric 29mm	210ml
XMHDS532	Mini Split Fabric 32mm	210ml
XMHDS535	Mini Split Fabric 35mm	210ml
XMHDS538	Mini Split Fabric 38mm	210ml
XMHDS544	Mini Split Fabric 44mm	210ml



# Welland Aurum® with Manuka honey Drainable - Flat

1<sup>st</sup> line defence in maintaining peristomal skin integrity.

Pack size  
**30**

CODE	DESCRIPTION	VOLUME
XMHDM519	Midi Split Fabric 19mm	350ml
XMHDM522	Midi Split Fabric 22mm	350ml
XMHDM525	Midi Split Fabric 25mm	350ml
XMHDM529	Midi Split Fabric 29mm	350ml
XMHDM532	Midi Split Fabric 32mm	350ml
XMHDM535	Midi Split Fabric 35mm	350ml
XMHDM538	Midi Split Fabric 38mm	350ml
XMHDM544	Midi Split Fabric 44mm	350ml
XMHDL519	Maxi Split Fabric 19mm	555ml
XMHDL522	Maxi Split Fabric 22mm	555ml
XMHDL525	Maxi Split Fabric 25mm	555ml
XMHDL529	Maxi Split Fabric 29mm	555ml
XMHDL532	Maxi Split Fabric 32mm	555ml
XMHDL535	Maxi Split Fabric 35mm	555ml
XMHDL538	Maxi Split Fabric 38mm	555ml
XMHDL544	Maxi Split Fabric 44mm	555ml



# Welland Aurum® with Manuka honey Drainable - Convex

1<sup>st</sup> line defence in maintaining peristomal skin integrity with fully soft flexible convexity.

Pack size  
**10**

CODE	DESCRIPTION	VOLUME
<b>25MM PLATEAU SIZE – CUT-TO-FIT</b>		
XMHNDS413	Mini Split Fabric 13-25mm	160ml
XMHNDS513	Midi Split Fabric 13-25mm	320ml
XMHNDS913	Maxi Split Fabric 13-25mm	470ml
<b>25MM PLATEAU SIZE – PRECUT</b>		
XMHNDS519	Midi Split Fabric 19mm	320ml
XMHNDS522	Midi Split Fabric 22mm	320ml
XMHNDS525	Midi Split Fabric 25mm	320ml
XMHNDS919	Maxi Split Fabric 19mm	470ml
XMHNDS922	Maxi Split Fabric 22mm	470ml
XMHNDS925	Maxi Split Fabric 25mm	470ml



# Welland Aurum® with Manuka honey Drainable - Convex

1<sup>st</sup> line defence in maintaining peristomal skin integrity with fully soft flexible convexity.

Pack size  
**10**

CODE	DESCRIPTION	VOLUME
------	-------------	--------

## 35MM PLATEAU SIZE – CUT-TO-FIT

XMHNDM413	Mini Split Fabric CTF 13-35mm	160ml
XMHNDM513	Midi Split Fabric CTF 13-35mm	320ml
XMHNDM913	Maxi Split Fabric CTF 13-35mm	470ml

## 35MM PLATEAU SIZE – PRECUT

XMHNDM519	Midi Split Fabric 19mm	320ml
XMHNDM522	Midi Split Fabric 22mm	320ml
XMHNDM525	Midi Split Fabric 25mm	320ml
XMHNDM529	Midi Split Fabric 29mm	320ml
XMHNDM532	Midi Split Fabric 32mm	320ml
XMHNDM535	Midi Split Fabric 35mm	320ml
XMHNDM919	Maxi Split Fabric 19mm	470ml
XMHNDM922	Maxi Split Fabric 22mm	470ml
XMHNDM925	Maxi Split Fabric 25mm	470ml
XMHNDM929	Maxi Split Fabric 29mm	470ml
XMHNDM932	Maxi Split Fabric 32mm	470ml
XMHNDM935	Maxi Split Fabric 35mm	470ml



# Welland Aurum® with Manuka honey Drainable - Convex

1<sup>st</sup> line defence in maintaining peristomal skin integrity with fully soft flexible convexity.

Pack size  
**10**

CODE	DESCRIPTION	VOLUME
<b>48MM PLATEAU SIZE – CUT-TO-FIT</b>		
XMHNDL513	Midi Split Fabric CTF 13-48mm	320ml
XMHNDL913	Maxi Split Fabric CTF 13-48mm	470ml
<b>48MM PLATEAU SIZE – PRECUT</b>		
XMHNDL532	Midi Split Fabric 32mm	320ml
XMHNDL535	Midi Split Fabric 35mm	320ml
XMHNDL538	Midi Split Fabric 38mm	320ml
XMHNDL544	Midi Split Fabric 44mm	320ml
XMHNDL932	Maxi Split Fabric 32mm	470ml
XMHNDL935	Maxi Split Fabric 35mm	470ml
XMHNDL938	Maxi Split Fabric 38mm	470ml
XMHNDL944	Maxi Split Fabric 44mm	470ml
<b>60MM PLATEAU SIZE – CUT-TO-FIT</b>		
XMHNDX813	Midi Plus Split Fabric 13-60mm	320ml
XMHNDX213	Maxi Plus Split Fabric 13-60mm	470ml





# Welland Aurum® Profile with Manuka honey Drainable

Soft and mouldable 3D skin barrier for hernias, curves and creases.

Pack size  
**10**

CODE	DESCRIPTION	VOLUME
------	-------------	--------

## 25MM PLATEAU SIZE – CUT-TO-FIT

XMHCDS413	Mini Split Fabric 13-25mm	160ml
XMHCDS513	Midi Split Fabric 13-25mm	320ml
XMHCDS913	Maxi Split Fabric 13-25mm	470ml

## 35MM PLATEAU SIZE – CUT-TO-FIT

XMHCMD413	Mini Split Fabric 13-35mm	160ml
XMHCMD513	Midi Split Fabric 13-35mm	320ml
XMHCMD913	Maxi Split Fabric 13-35mm	470ml
XMHCMD313	Maxi Clear 13-35mm	470ml

## 35MM PLATEAU SIZE – PRECUT

XMHCMD519	Midi Split Fabric 19mm	320ml
XMHCMD522	Midi Split Fabric 22mm	320ml
XMHCMD525	Midi Split Fabric 25mm	320ml
XMHCMD529	Midi Split Fabric 29mm	320ml
XMHCMD532	Midi Split Fabric 32mm	320ml
XMHCMD535	Midi Split Fabric 35mm	320ml
XMHCMD919	Maxi Split Fabric 19mm	470ml
XMHCMD922	Maxi Split Fabric 22mm	470ml
XMHCMD925	Maxi Split Fabric 25mm	470ml
XMHCMD929	Maxi Split Fabric 29mm	470ml
XMHCMD932	Maxi Split Fabric 32mm	470ml
XMHCMD935	Maxi Split Fabric 35mm	470ml





# Welland Aurum® Profile with Manuka honey Drainable

Soft and mouldable 3D skin barrier for hernias, curves and creases.

Pack size  
10

CODE	DESCRIPTION	VOLUME
<b>45MM PLATEAU SIZE – CUT-TO-FIT</b>		
XMHCDL513	Midi Split Fabric 13-48mm	320ml
XMHCDL913	Maxi Split Fabric 13-48mm	470ml
XMHCDL313	Maxi Clear 13-48mm	470ml
<b>45MM PLATEAU SIZE – PRECUT</b>		
XMHCDL532	Midi Split Fabric 32mm	320ml
XMHCDL535	Midi Split Fabric 35mm	320ml
XMHCDL538	Midi Split Fabric 38mm	320ml
XMHCDL544	Midi Split Fabric 44mm	320ml
XMHCDL932	Maxi Split Fabric 32mm	470ml
XMHCDL935	Maxi Split Fabric 35mm	470ml
XMHCDL938	Maxi Split Fabric 38mm	470ml
XMHCDL944	Maxi Split Fabric 44mm	470ml
<b>60MM PLATEAU SIZE – CUT-TO-FIT</b>		
XMHCDX813	Midi Plus Split Fabric 13-60mm	320ml
XMHCDX113	Midi Plus Clear 13-60mm	320ml
XMHCDX213	Maxi Plus Split Fabric 13-60mm	470ml



# Welland Aurum® Plus Drainable – Flat

Stoma pouches designed around what you value. Choice, independence, healthy skin and leak-free days. The drainable pouch features a release tab to aid grip when opening and a hook-to-hook fastening lets you feel when the outlet is securely closed.

**Pack size**  
**30**

CODE	POUCH SIZE	COLOUR	APERTURE SIZE	VOLUME
------	------------	--------	---------------	--------

### CUT-TO-FIT

X1D1A11s	Mini	Black	13-70mm	200ml
X1D1A21s	Mini	Sand	13-70mm	200ml
X1D1A12s	Midi	Black	13-80mm	350ml
X1D1A22s	Midi	Sand	13-80mm	350ml
X1D1A32s	Midi	Clear	13-80mm	350ml
X1D1A13s	Maxi	Black	13-80mm	550ml
X1D1A23s	Maxi	Sand	13-80mm	550ml
X1D1A33s	Maxi	Clear	13-80mm	550ml



# Welland Aurum® Plus Drainable – Flat

Stoma pouches designed around what you value. Choice, independence, healthy skin and leak-free days. The drainable pouch features a release tab to aid grip when opening and a hook-to-hook fastening lets you feel when the outlet is securely closed.

**Pack size**  
**30**

CODE	POUCH SIZE	COLOUR	APERTURE SIZE	VOLUME
<b>PRECUT</b>				
X1D1A1220	Midi	Black	20mm	350ml
X1D1A1225	Midi	Black	25mm	350ml
X1D1A1229	Midi	Black	29mm	350ml
X1D1A1232	Midi	Black	32mm	350ml
X1D1A1235	Midi	Black	35mm	350ml
X1D1A1238	Midi	Black	38mm	350ml
X1D1A1244	Midi	Black	44mm	350ml
X1D1A2220	Midi	Sand	20mm	350ml
X1D1A2225	Midi	Sand	25mm	350ml
X1D1A2229	Midi	Sand	29mm	350ml
X1D1A2232	Midi	Sand	32mm	350ml
X1D1A2235	Midi	Sand	35mm	350ml
X1D1A2238	Midi	Sand	38mm	350ml
X1D1A2244	Midi	Sand	44mm	350ml
X1D1A1320	Maxi	Black	20mm	550ml
X1D1A1325	Maxi	Black	25mm	550ml
X1D1A1329	Maxi	Black	29mm	550ml
X1D1A1332	Maxi	Black	32mm	550ml
X1D1A1335	Maxi	Black	35mm	550ml
X1D1A1338	Maxi	Black	38mm	550ml
X1D1A1344	Maxi	Black	44mm	550ml
X1D1A2320	Maxi	Sand	20mm	550ml
X1D1A2325	Maxi	Sand	25mm	550ml
X1D1A2329	Maxi	Sand	29mm	550ml
X1D1A2332	Maxi	Sand	32mm	550ml
X1D1A2335	Maxi	Sand	35mm	550ml
X1D1A2338	Maxi	Sand	38mm	550ml
X1D1A2344	Maxi	Sand	44mm	550ml

# Welland Aurum® with Manuka honey Urostomy - Flat

1<sup>st</sup> line defence in maintaining peristomal skin integrity.  
For use with Welland Night Drainage Bag (ND700)  
- see page 68.

Pack size  
**10**

CODE	DESCRIPTION	VOLUME
<b>CUT-TO-FIT</b>		
XMHUM513	Midi Split Fabric 13-55mm	360ml
XMHUM713	Midi Clear 13-55mm	360ml
XMHUL513	Maxi Split Fabric 13-55mm	485ml
XMHUL713	Maxi Clear 13-55mm	485ml
<b>PRECUT</b>		
XMHUM519	Midi Split Fabric 19mm	360ml
XMHUM522	Midi Split Fabric 22mm	360ml
XMHUM525	Midi Split Fabric 25mm	360ml
XMHUM529	Midi Split Fabric 29mm	360ml
XMHUM532	Midi Split Fabric 32mm	360ml
XMHUM535	Midi Split Fabric 35mm	360ml
XMHUM538	Midi Split Fabric 38mm	360ml
XMHUL519	Maxi Split Fabric 19mm	485ml
XMHUL522	Maxi Split Fabric 22mm	485ml
XMHUL525	Maxi Split Fabric 25mm	485ml
XMHUL529	Maxi Split Fabric 29mm	485ml
XMHUL532	Maxi Split Fabric 32mm	485ml
XMHUL535	Maxi Split Fabric 35mm	485ml
XMHUL538	Maxi Split Fabric 38mm	485ml



# Welland Aurum® with Manuka honey Urostomy - Convex

1<sup>st</sup> line defence in maintaining peristomal skin integrity with fully soft flexible convexity. For use with Welland Night Drainage Bag (ND700) - see page 68.

Pack size  
**10**

CODE	DESCRIPTION	VOLUME
<b>25MM PLATEAU SIZE – CUT-TO-FIT</b>		
XMHNUS513	Midi Split Fabric 13-25mm	360ml
XMHNUS913	Maxi Split Fabric 13-25mm	485ml
<b>25MM PLATEAU SIZE – PRECUT</b>		
XMHNUS519	Midi Split Fabric 19mm	360ml
XMHNUS522	Midi Split Fabric 22mm	360ml
XMHNUS525	Midi Split Fabric 25mm	360ml
XMHNUS919	Maxi Split Fabric 19mm	485ml
XMHNUS922	Maxi Split Fabric 22mm	485ml
XMHNUS925	Maxi Split Fabric 25mm	485ml



# Welland Aurum® with Manuka honey Urostomy - Convex

1<sup>st</sup> line defence in maintaining peristomal skin integrity with fully soft flexible convexity. For use with Welland Night Drainage Bag (ND700) - see page 68.

Pack size  
10

CODE	DESCRIPTION	VOLUME
<b>35MM PLATEAU SIZE – CUT-TO-FIT</b>		
XMHNUM513	Midi Split Fabric 13-35mm	360ml
XMHNUM913	Maxi Split Fabric 13-35mm	485ml
<b>35MM PLATEAU SIZE – PRECUT</b>		
XMHNUM519	Midi Split Fabric 19mm	360ml
XMHNUM522	Midi Split Fabric 22mm	360ml
XMHNUM525	Midi Split Fabric 25mm	360ml
XMHNUM529	Midi Split Fabric 29mm	360ml
XMHNUM532	Midi Split Fabric 32mm	360ml
XMHNUM535	Midi Split Fabric 35mm	360ml
XMHNUM919	Maxi Split Fabric 19mm	485ml
XMHNUM922	Maxi Split Fabric 22mm	485ml
XMHNUM925	Maxi Split Fabric 25mm	485ml
XMHNUM929	Maxi Split Fabric 29mm	485ml
XMHNUM932	Maxi Split Fabric 32mm	485ml
XMHNUM935	Maxi Split Fabric 35mm	485ml



# Welland Aurum® with Manuka honey Urostomy - Convex

1<sup>st</sup> line defence in maintaining peristomal skin integrity with fully soft flexible convexity. For use with Welland Night Drainage Bag (ND700) - see page 68.

Pack size  
**10**

CODE	DESCRIPTION	VOLUME
<b>48MM PLATEAU SIZE – CUT-TO-FIT</b>		
XMHNUL513	Midi Split Fabric 13-48mm	360ml
XMHNUL913	Maxi Split Fabric 13-48mm	485ml
<b>48MM PLATEAU SIZE – PRECUT</b>		
XMHNUL532	Midi Split Fabric 32mm	360ml
XMHNUL535	Midi Split Fabric 35mm	360ml
XMHNUL538	Midi Split Fabric 38mm	360ml
XMHNUL544	Midi Split Fabric 44mm	360ml
XMHNUL932	Maxi Split Fabric 32mm	485ml
XMHNUL935	Maxi Split Fabric 35mm	485ml
XMHNUL938	Maxi Split Fabric 38mm	485ml



# Welland Aurum Profile Urostomy

Soft and mouldable 3D skin barrier for hernias, curves and creases. For use with Welland Night Drainage Bag (ND700) - see page 68.

Pack size  
**10**

CODE	DESCRIPTION	VOLUME
<b>25MM PLATEAU SIZE – CUT-TO-FIT</b>		
XMHCUS513	Midi Split Fabric 13-25mm	360ml
XMHCUS913	Maxi Split Fabric 13-25mm	485ml
<b>25MM PLATEAU SIZE – PRECUT</b>		
XMHCUS519	Midi Split Fabric 19mm	360ml
XMHCUS522	Midi Split Fabric 22mm	360ml
XMHCUS525	Midi Split Fabric 25mm	360ml
XMHCUS919	Maxi Split Fabric 19mm	485ml
XMHCUS922	Maxi Split Fabric 22mm	485ml
XMHCUS925	Maxi Split Fabric 25mm	485ml





# Welland Aurum Profile Urostomy

Soft and mouldable 3D skin barrier for hernias, curves and creases. For use with Welland Night Drainage Bag (ND700) - see page 68.

**Pack size  
10**

CODE	DESCRIPTION	VOLUME
<b>35MM PLATEAU SIZE – CUT-TO-FIT</b>		
XMHCUM513	Midi Split Fabric 13-35mm	360ml
XMHCUM913	Maxi Split Fabric 13-35mm	485ml
<b>35MM PLATEAU SIZE – PRECUT</b>		
XMHCUM519	Midi Split Fabric 19mm	360ml
XMHCUM522	Midi Split Fabric 22mm	360ml
XMHCUM525	Midi Split Fabric 25mm	360ml
XMHCUM529	Midi Split Fabric 29mm	360ml
XMHCUM532	Midi Split Fabric 32mm	360ml
XMHCUM535	Midi Split Fabric 35mm	360ml
XMHCUM919	Maxi Split Fabric 19mm	485ml
XMHCUM922	Maxi Split Fabric 22mm	485ml
XMHCUM925	Maxi Split Fabric 25mm	485ml
XMHCUM929	Maxi Split Fabric 29mm	485ml
XMHCUM932	Maxi Split Fabric 32mm	485ml



# Welland Aurum Profile Urostomy

Soft and mouldable 3D skin barrier for hernias, curves and creases. For use with Welland Night Drainage Bag (ND700) - see page 68.

Pack size  
**10**

CODE	DESCRIPTION	VOLUME
<b>48MM PLATEAU SIZE – CUT-TO-FIT</b>		
XMHCUL513	Midi Split Fabric 13-48mm	360ml
XMHCUL913	Maxi Split Fabric 13-48mm	485ml
<b>48MM PLATEAU SIZE – PRECUT</b>		
XMHCUL532	Midi Split Fabric 32mm	360ml
XMHCUL535	Midi Split Fabric 35mm	360ml
XMHCUL932	Maxi Split Fabric 32mm	485ml
XMHCUL935	Maxi Split Fabric 35mm	485ml
XMHCUL938	Maxi Split Fabric 38mm	485ml



# Welland Aurum® Plus Urostomy – Flat

Stoma pouches designed around what you value. Choice, independence, healthy skin and leak-free days. The urostomy pouch has a refined shape to reduce the risk of the outlet twisting and blocking the flow of urine. Includes a tap pocket design to keep the tap discreetly tucked away and secure. For use with Welland Night Drainage Bag (ND700) - see page 68.

**Pack size  
10**

CODE	POUCH SIZE	COLOUR	APERTURE SIZE	VOLUME
<b>CUT-TO-FIT</b>				
X1U1E12s	Midi	Black	13-55mm	350ml
X1U1E22s	Midi	Sand	13-55mm	350ml
X1U1E32s	Midi	Clear	13-55mm	350ml
X1U1E13s	Maxi	Black	13-55mm	550ml
X1U1E23s	Maxi	Sand	13-55mm	550ml
X1U1E33s	Maxi	Clear	13-55mm	550ml
<b>PRECUT</b>				
X1U1E1320	Maxi	Black	20mm	550ml
X1U1E1325	Maxi	Black	25mm	550ml
X1U1E1329	Maxi	Black	29mm	550ml
X1U1E1332	Maxi	Black	32mm	550ml
X1U1E1335	Maxi	Black	35mm	550ml
X1U1E1338	Maxi	Black	38mm	550ml
X1U1E2320	Maxi	Sand	20mm	550ml
X1U1E2325	Maxi	Sand	25mm	550ml
X1U1E2329	Maxi	Sand	29mm	550ml
X1U1E2332	Maxi	Sand	32mm	550ml
X1U1E2335	Maxi	Sand	35mm	550ml
X1U1E2338	Maxi	Sand	38mm	550ml



# Welland Night Drainage Bag

Easiflo™ ensures a continuous flow, even if the urostomy bag twists or kinks during the night. Compatible for use with any eakin or Welland Urostomy pouches.

CODE	DESCRIPTION	PACK SIZE	VOLUME
ND700	Night Drainage Bag	5	2L





# Welland Aurum® 2 with Manuka honey - Baseplate Ring size 45mm

Mechanical coupling clip and stick for extra security

CODE	DESCRIPTION	PACK SIZE
<b>FLAT</b>		
XMH2F413	Baseplate CTF 13-40mm	5
XMH2F419	Baseplate 19mm	5
XMH2F422	Baseplate 22mm	5
XMH2F425	Baseplate 25mm	5
XMH2F429	Baseplate 29mm	5
XMH2F432	Baseplate 32mm	5
XMH2F435	Baseplate 35mm	5
XMH2F438	Baseplate 38mm	5
<b>CONVEX</b>		
XMH2NF413	Baseplate CTF 13-25mm	5
XMH2NF419	Baseplate 19mm	5
XMH2NF422	Baseplate 22mm	5



# Welland Aurum® 2 with Manuka honey - Pouch Ring size 45mm

Mechanical coupling clip and stick for extra security

CODE	DESCRIPTION	PACK SIZE	VOLUME
<b>CLOSED</b>			
XMH2C445	Mini Split Fabric	30	85ml
XMH2C545	Midi Split Fabric	30	220ml
XMH2C145	Maxi Split Fabric	30	325ml
<b>DRAINABLE</b>			
XMH2D445	Mini Split Fabric	30	100ml
XMH2D545	Midi Split Fabric	30	250ml
XMH2D145	Maxi Split Fabric	30	400ml



# Welland Aurum® 2 with Manuka honey - Baseplate Ring size 55mm

Mechanical coupling clip and stick for extra security

CODE	DESCRIPTION	PACK SIZE
<b>FLAT</b>		
XMH2F513	Baseplate CTF 13-50mm	5
XMH2F538	Baseplate 38mm	5
XMH2F544	Baseplate 44mm	5
<b>CONVEX</b>		
XMH2NF513	Baseplate CTF 13-35mm	5
XMH2NF525	Baseplate 25mm	5
XMH2NF529	Baseplate 29mm	5
XMH2NF532	Baseplate 32mm	5
XMH2NF535	Baseplate 35mm	5





# Welland Aurum® 2 with Manuka honey - Pouch Ring size 55mm

Mechanical coupling clip and stick for extra security

CODE	DESCRIPTION	PACK SIZE	VOLUME
<b>CLOSED</b>			
XMH2C455	Mini Split Fabric	30	50ml
XMH2C555	Midi Split Fabric	30	165ml
XMH2C155	Maxi Split Fabric	30	280ml
<b>DRAINABLE</b>			
XMH2D455	Mini Split Fabric	30	105ml
XMH2D555	Midi Split Fabric	30	300ml
XMH2D155	Maxi Split Fabric	30	400ml



# Welland Aurum® 2 with Manuka honey - Ring size 70mm

Mechanical coupling clip and stick for extra security

CODE	DESCRIPTION	PACK SIZE
<b>CTF</b>		
XMH2F713	Baseplate Flat 13-65mm	5
XMH2NF713	Baseplate Convex 13-48mm	5



CODE	DESCRIPTION	PACK SIZE	VOLUME
<b>CLOSED</b>			
XMH2C570	Midi Split Fabric	10	100ml
XMH2C170	Maxi Split Fabric	10	210ml
<b>DRAINABLE</b>			
XMH2D570	Midi Split Fabric	10	160ml
XMH2D170	Maxi Split Fabric	10	290ml



# Welland Aurum® 2 with Manuka honey - Urostomy Ring size 45mm

Mechanical coupling clip and stick for extra security

CODE	DESCRIPTION	PACK SIZE
<b>FLAT</b>		
XMH2UF413	Uro Baseplate CTF 13-40mm	5
XMH2UF419	Uro Baseplate 19mm	5
XMH2UF422	Uro Baseplate 22mm	5
XMH2UF425	Uro Baseplate 25mm	5
XMH2UF429	Uro Baseplate 29mm	5
XMH2UF432	Uro Baseplate 32mm	5
XMH2UF435	Uro Baseplate 35mm	5
XMH2UF438	Uro Baseplate 38mm	5
<b>CONVEX</b>		
XMH2NUF413	Uro Baseplate CTF 13-25mm	5
XMH2NUF419	Uro Baseplate 19mm	5
XMH2NUF422	Uro Baseplate 22mm	5



CODE	DESCRIPTION	PACK SIZE	VOL.
XMH2U545	Midi Urostomy Split Fabric*	10	190ml
XMH2U145	Maxi Urostomy Split Fabric*	10	350ml



\*Compatible with Welland Night Drainage Bag (ND700)

# Welland Aurum® 2 with Manuka honey - Urostomy Ring size 55mm

Mechanical coupling clip and stick for extra security

CODE	DESCRIPTION	PACK SIZE
<b>FLAT</b>		
XMH2UF513	Uro Baseplate CTF 13-50mm	5
<b>CONVEX</b>		
XMH2NUF513	Uro Baseplate CTF 13-35mm	5
XMH2NUF525	Uro Baseplate 25mm	5
XMH2NUF529	Uro Baseplate 29mm	5
XMH2NUF532	Uro Baseplate 32mm	5
XMH2NUF535	Uro Baseplate 35mm	5



CODE	DESCRIPTION	PACK SIZE	VOL
XMH2U555	Midi Urostomy Split Fabric*	10	150ml
XMH2U155	Maxi Urostomy Split Fabric*	10	300ml



\*Compatible with Welland Night Drainage Bag (ND700)



# Welland HydroFrame® with Manuka honey

CODE	DESCRIPTION	PACK SIZE
XMHWAFH33	HydroFrame Standard Flange Extender with Manuka honey	20
XMHWAFM33	HydroFrame <b>Mini</b> Flange Extender with Manuka honey	30

## Flange extenders with Manuka honey for extra security.

HydroFrame® with Manuka honey, helping to promote healthy skin around the stoma. For ostomates who want additional support and security for their pouch, the HydroFrame® range of flange extenders with medical grade Manuka honey provide the ideal solution. The 100% hydrocolloid flange extenders are designed to work with any type of pouch and minimise the risk of leakage.



# Welland HydroFrame®

CODE	DESCRIPTION	PACK SIZE
XWAFH33	HydroFrame Standard Flange Extender	20
XWAFM33	HydroFrame <b>Mini</b> Flange Extender	30

## Flange extenders for extra security.

For ostomates who want additional support and security for their pouch, the HydroFrame® range of flange extenders provides the ideal solution. The 100% hydrocolloid flange extenders are designed to work with any type of pouch and minimise the risk of leakage.

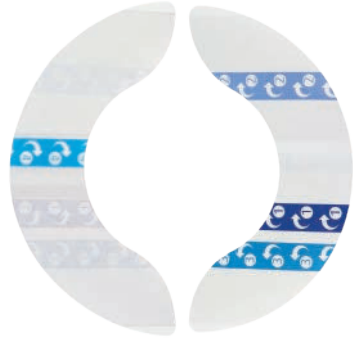


# Welland UltraFrame®

CODE	DESCRIPTION	PACK SIZE
XUFWAFH33	UltraFrame Flange Extender	20

**Ultra-thin and highly conformable transparent film flange extender.**

UltraFrame®, the new generation of flange extenders. UltraFrame® is a revolutionary alternative to current hydrocolloid-based flange extenders, extremely durable, secure and discreet due to its ultra-thin and highly conformable transparent film. Giving active ostomates and ostomates with hernias or irregularities added reassurance and confidence.



# Welland HyperSeal® Washers with Manuka honey

CODE	DESCRIPTION	PACK SIZE
XMHWA350	Large 2.5mm thick (100mm / 20mm)	5
XMHWA400	Small 4mm thick (50mm / 19mm)	30

## PRE-CUT SIZES

XMHWA300	20mm 2.5mm thick (50mm / 19mm)	30
XMHWA310	30mm 2.5mm thick (60mm / 30mm)	30
XMHWA320	40mm 2.5mm thick (70mm / 40mm)	30
XMHWA330	50mm 2.5mm thick (80mm / 50mm)	30

### 1st line defence in maintaining peristomal skin integrity.

HyperSeal® Washers with Manuka honey, helping to promote healthy skin around the stoma. For ostomates who require extra security from leakage due to uneven skin surfaces, the HyperSeal® range of washers with medical grade Manuka honey provides the ideal solution. HyperSeal® Washers with Manuka honey mould perfectly to the body contours and come in a wide range of pre-cut sizes.





## Welland One Piece Belt

CODE	DESCRIPTION	PACK SIZE
XBLTS01	Small Belt 120cm	1
XBLTL01	Large Belt 145cm	1

The soft fabric belt with adjustable Velcro® fastening is easy and comfortable to wear. With no hard, plastic attachments, ideal for use with a 1 or 2 piece product. Machine washable at low temperatures.



## Welland Night Drainage Bag

CODE	DESCRIPTION	PACK SIZE	VOLUME
ND700	Night Drainage Bag	5	2L

Welland's Night Drainage 2L Bag features a unique device, Easiflo™. Easiflo™ ensures a continuous flow, even if the urostomy bag twists or kinks during the night, therefore reducing the chance of leakage or blockage. Also compatible for use with any eakin or Welland Urostomy pouches.



# Welland Adhesive Remover

CODE	DESCRIPTION	PACK SIZE	VOLUME
WAD060	Wipes	60	-
WAB050	Spray	1	50ml

## Pharmaceutical Grade silicone based adhesive remover

Provides fast and painless removal of stoma appliances. Pharmaceutical silicone based formula with no alcohol added, dries in seconds ready for the next pouch. Sting free and protects skin from the harmful effects of repeated skin stripping.



# Welland Barrier Film

CODE	DESCRIPTION	PACK SIZE	VOLUME
WBF100	Wipes	30	-
WBF060	Wipes	60	-
WBS050	Spray	1	50ml

## Pharmaceutical Grade silicone based barrier film

WBF® Barrier Film protects the skin from a stripping effect from repeated removal of adhesive dressings, tapes and stoma products. Pharmaceutical silicone based formula with no alcohol added, will not sting when used on red, sore or excoriated skin and dries in seconds.



# Welland Stoma Powder

CODE	DESCRIPTION	PACK SIZE	VOLUME
WPP025	Stoma Powder	1	25g

## For the perfect puff of powder

Welland Stoma Powder protects moist skin by helping patient's secure their next pouch and reducing the risk of leakage.

The unique puffer pack allows two options for application, either puff as a cloud for hard to reach areas or targeted lines or dots for more accurate application. Semi-transparent pack so that patients can see how much is remaining.



# Welland Stoma Paste

CODE	DESCRIPTION	PACK SIZE	VOLUME
WSP100	Paste tube	1	100g

## Hypo-allergenic, alcohol free, no sting paste

A hypo-allergenic, alcohol free, no sting paste for use on uneven skin around a stoma. Used to fill skin dips, smooth over scar lines and create the ideal base for a safe, secure pouch application. Paste remains pliable throughout application giving great flexibility and is durable to give long lasting performance.





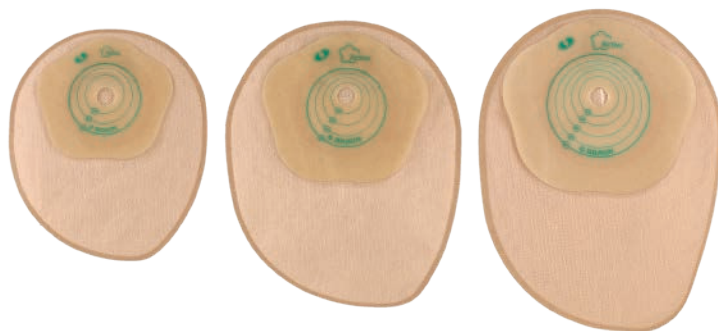


# B|Braun® Flexima® Active Closed - Flat

Second skin technology with 100% SIS skin barrier for superior flexibility and security.

Pack size  
**30**

CODE	DESCRIPTION	VOLUME
<b>CUT-TO-FIT</b>		
4612215	Mini Split Fabric 15-45mm	220ml
4612115	Midi Split Fabric 15-50mm	480ml
4611115	Midi Clear 15-50mm	480ml
4612380	Maxi Split Fabric 15-65mm	600ml
4611380	Maxi Clear 15-65mm	600ml
<b>PRECUT</b>		
4610125	Midi 25mm	480ml
4610130	Midi 30mm	480ml
4610135	Midi 35mm	480ml
4610140	Midi 40mm	480ml



# B|Braun® Flexima® Closed - Flat

Hydrocolloid flower shaped skin barrier.

Pack size  
**30**

CODE	DESCRIPTION	VOLUME
<b>CUT-TO-FIT</b>		
44212	Mini Tan 15-45mm	200ml
44015	Midi Tan 15-60mm	465ml
44115	Midi Clear 15-60mm	465ml
44070	Maxi Split Fabric 15-70mm	590ml
44170	Maxi Clear 15-77mm	590ml
<b>PRECUT</b>		
44025	Midi Tan 25mm	465ml
44030	Midi Tan 30mm	465ml
44035	Midi Tan 35mm	465ml
44040	Midi Tan 40mm	465ml
44045	Midi Tan 45mm	465ml





# B|Braun® Flexima® Closed - Convex

Hydrocolloid flower shaped skin barrier with firm graduated convexity.

Pack size  
**30**

CODE	DESCRIPTION	VOLUME
<b>CUT-TO-FIT</b>		
44018	Midi Tan 15-45mm	430ml
44118	Midi Clear 15-45mm	430ml
<b>PRECUT</b>		
44031	Midi Tan 30mm	430ml
44037	Midi Tan 35mm	430ml





# B|Braun® Flexima® Active Drainable - Flat

Second skin technology with 100% SIS skin barrier for superior flexibility and security.

Pack size  
**30**

CODE	DESCRIPTION	VOLUME
<b>CUT-TO-FIT</b>		
4622215	Mini Split Fabric 15-45mm	260ml
4620215	Mini Tan 15-45 mm	260ml
4622115	Midi Split Fabric 15-50 mm	580ml
4620115	Midi Tan 15-50 mm	580ml
4621115	Midi Clear 15-50 mm	580ml
4622380	Maxi Split Fabric 15-65 mm	710ml
4620380	Maxi Tan 15-65 mm	710ml
4621380	Maxi Clear 15-65 mm	710ml
<b>PRECUT</b>		
4620125	Midi Tan 25mm	580ml
4620130	Midi Tan 30mm	580ml
4620135	Midi Tan 35mm	580ml
4620140	Midi Tan 40mm	580ml



# B|Braun® Flexima® Drainable - Flat

Hydrocolloid flower shaped skin barrier.

Pack size  
**30**

CODE	DESCRIPTION	VOLUME
<b>CUT-TO-FIT</b>		
42716	Midi Split Fabric 15-60mm	580ml
42715	Midi Tan 15-60mm	580ml
42815	Midi Clear 15-60mm	580ml
42776	Maxi Split Fabric 15-70mm	710ml
<b>PRECUT</b>		
42725	Midi Tan 25mm	580ml
42730	Midi Tan 30mm	580ml
42735	Midi Tan 35mm	580ml
42740	Midi Tan 40mm	580ml



# B|Braun® Flexima® Drainable - Convex

Hydrocolloid flower shaped skin barrier with firm graduated convexity.

Pack size  
10

CODE	DESCRIPTION	VOLUME
<b>CUT-TO-FIT</b>		
42719	Midi Split Fabric 15-35mm	590ml
42717	Midi Tan 15-35mm	590ml
42817	Midi Clear 15-35mm	590ml
42720	Midi Split Fabric 15-45mm	590ml
42718	Midi Tan 15-45mm	590ml
42818	Midi Clear 15-45mm	590ml
<b>PRECUT</b>		
42726	Midi Tan 25mm	590ml
42731	Midi Tan 30mm	590ml



# B|Braun® Flexima® Uro Silk - Flat

Hydrocolloid flower shaped skin barrier with no drip tap and a connector for every pouch.

CODE	DESCRIPTION	PACK SIZE	VOLUME
<b>CUT-TO-FIT</b>			
44914	Midi Tan 12-55 mm	30	630ml
44913	Midi Clear 12-55 mm	30	630ml
<b>PRECUT</b>			
44820	Midi Clear 20mm	30	630ml
44825	Midi Clear 25mm	30	630ml
44830	Midi Clear 30mm	30	630ml
44836	Midi Clear 35mm	30	630ml
<b>OVERNIGHT BAG</b>			
28300	Urined Overnight Bag	10	2L



# B|Braun® Flexima® Uro Silk - Convex

Hydrocolloid flower shaped skin barrier with no drip tap and a connector for every pouch with firm graduated convexity.

CODE	DESCRIPTION	PACK SIZE	VOLUME
<b>CUT-TO-FIT</b>			
44914	Midi Tan 12-55 mm	30	630ml
44913	Midi Clear 12-55 mm	30	630ml
<b>PRECUT</b>			
44820	Midi Clear 20mm	30	630ml
44825	Midi Clear 25mm	30	630ml
44830	Midi Clear 30mm	30	630ml
44836	Midi Clear 35mm	30	630ml
<b>OVERNIGHT BAG</b>			
28300	Urined Overnight Bag	10	2L



# B|Braun® Flexima® Key - Ring size 40mm

Adhesive coupling system simple to teach simple to learn.

CODE	DESCRIPTION	PACK SIZE
62040	Baseplate CTF 15-35mm	5



CODE	DESCRIPTION	PACK SIZE	VOLUME
<b>CLOSED</b>			
62140	Midi Tan	30	440ml
62240	Midi Clear	30	440ml
<b>DRAINABLE</b>			
621241	Midi Tan	30	550ml
621240	Midi Clear	30	550ml





# B|Braun® Flexima® Key - Ring size 50mm

Adhesive coupling system simple to teach simple to learn.

CODE	DESCRIPTION	PACK SIZE
<b>FLAT</b>		
62050	Baseplate CTF 15-45mm	5
<b>CONVEX</b>		
62052	Baseplate CTF 15-25mm	5



CODE	DESCRIPTION	PACK SIZE	VOLUME
<b>CLOSED</b>			
62150	Midi Tan	30	420ml
<b>DRAINABLE</b>			
621251	Midi Tan	30	525ml
621250	Midi Clear	30	525ml
<b>HIGH FLOW</b>			
62550	Maxi Tan*	30	780ml

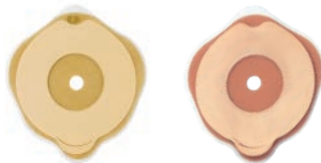


\*Compatible with Braun High Flow Collector (039901)

# B|Braun® Flexima® Key - Ring size 60mm

Adhesive coupling system simple to teach simple to learn.

CODE	DESCRIPTION	PACK SIZE
<b>FLAT</b>		
62060	Baseplate CTF 15-55mm	5
<b>CONVEX</b>		
62062	Baseplate CTF 15-35mm	5
62063	Baseplate CTF 15-45mm	5
62064	Baseplate 25mm	5
62066	Baseplate 30mm	5
62067	Baseplate 35mm	5
62069	Baseplate 40mm	5



CODE	DESCRIPTION	PACK SIZE	VOLUME
<b>CLOSED</b>			
62160	Midi Tan	30	550ml
<b>DRAINABLE</b>			
621261	Maxi Tan	30	670ml
621260	Maxi Clear	30	670ml
<b>HIGH FLOW</b>			
62560	Maxi Tan*	30	730ml



# B|Braun® Flexima® Key - Ring size 80mm

Adhesive coupling system simple to teach simple to learn.

CODE	DESCRIPTION	PACK SIZE
62080	Baseplate CTF 15-75mm	5



CODE	DESCRIPTION	PACK SIZE	VOLUME
<b>CLOSED</b>			
62180	Midi Tan	30	520ml
62280	Midi Clear	30	520ml
<b>HIGH FLOW</b>			
62680	Maxi Clear*	30	655ml



\*Compatible with Braun High Flow Collector (039901)

# B|Braun® Flexima® 3S - Baseplate Ring size 45mm

Mechanical coupling system simple to teach simple to learn.

CODE	DESCRIPTION	PACK SIZE
<b>FLAT</b>		
936415	Baseplate CTF 15-30mm	5
936420	Baseplate 20mm	5
936425	Baseplate 25mm	5
936430	Baseplate 30mm	5
<b>CONVEX</b>		
937415	Baseplate CTF 15-26mm	5
937425	Baseplate 25mm	5



# B|Braun® Flexima® 3S - Pouch Ring size 45mm

Mechanical coupling system simple to teach simple to learn.

CODE	DESCRIPTION	PACK SIZE	VOLUME
<b>CLOSED</b>			
931045	Midi Tan	30	520ml
931445	Maxi Tan	30	665ml
<b>DRAINABLE</b>			
932045	Midi Tan	30	650ml
932145	Midi Clear	30	650ml
932445	Maxi Tan	30	805ml
932545	Maxi Clear	30	805ml
<b>UROSTOMY</b>			
934045	Midi Tan**	30	675ml
934145	Midi Clear**	30	675ml

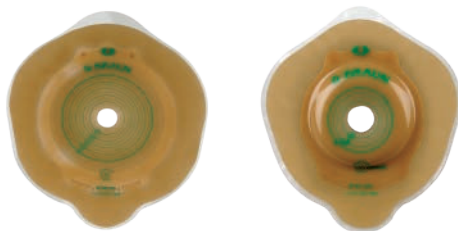


\*\*Compatible with Braun Urimed Overnight Bag (28300)

# B|Braun® Flexima® 3S - Baseplate Ring size 55mm

Mechanical coupling system simple to teach simple to learn.

CODE	DESCRIPTION	PACK SIZE
<b>FLAT</b>		
936515	Baseplate CTF 15-40mm	5
936535	Baseplate 35mm	5
936540	Baseplate 40mm	5
<b>CONVEX</b>		
937515	Baseplate CTF 15-36mm	5
937530	Baseplate 30mm	5



# B|Braun® Flexima® 3S - Pouch Ring size 55mm

Mechanical coupling system simple to teach simple to learn.

CODE	DESCRIPTION	PACK SIZE	VOLUME
<b>CLOSED</b>			
931055	Midi Tan	30	500ml
931455	Maxi Tan	30	655ml
931555	Maxi Clear	30	655ml
<b>DRAINABLE</b>			
932055	Midi Tan	30	635ml
932155	Midi Clear	30	635ml
932455	Maxi Tan	30	785ml
932555	Maxi Clear	30	785ml
933055	High Flow Pouch Tan*	30	970ml
933155	High Flow Pouch Clear*	30	970ml
<b>UROSTOMY</b>			
934055	Midi Tan**	30	635ml
934155	Midi Clear**	30	635ml



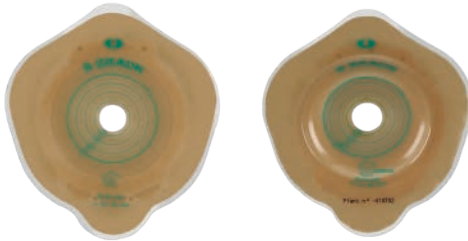
\*Compatible with Braun High Flow Collector (039901)

\*\*Compatible with Braun Urimed Overnight Bag (28300)

# B|Braun® Flexima® 3S - Baseplate Ring size 65mm

Mechanical coupling system simple to teach simple to learn.

CODE	DESCRIPTION	PACK SIZE
<b>FLAT</b>		
936615	Baseplate CTF 15-50mm	5
936645	Baseplate 45mm	5
<b>CONVEX</b>		
937615	Baseplate CTF 15-46mm	5





# B|Braun® Flexima® 3S - Pouch Ring size 65mm

Mechanical coupling system simple to teach simple to learn.

CODE	DESCRIPTION	PACK SIZE	VOLUME
<b>CLOSED</b>			
931065	Midi Tan	30	465ml
931465	Maxi Tan	30	630ml
931565	Maxi Clear	30	630ml
<b>DRAINABLE</b>			
932065	Midi Tan	30	615ml
932465	Maxi Tan	30	755ml
932565	Maxi Clear	30	755ml
933065	High Flow Pouch Tan*	30	940ml
933165	High Flow Pouch Clear*	30	940ml
<b>UROSTOMY</b>			
934065	Midi Tan**	30	620ml
934165	Midi Clear**	30	620ml



\*Compatible with Braun High Flow Collector (039901)

\*\*Compatible with Braun Urimed Overnight Bag (28300)

# B|Braun® Flexima® 3S - Ring size 80mm

Mechanical coupling system simple to teach simple to learn.

CODE	DESCRIPTION	PACK SIZE
936815	Baseplate CTF 15-65mm	5



CODE	DESCRIPTION	PACK SIZE	VOLUME
<b>CLOSED</b>			
931480	Maxi Closed Tan	30	510ml
931580	Maxi Closed Clear	30	510ml
<b>DRAINABLE</b>			
932480	Maxi Tan	30	715ml
932580	Maxi Clear	30	715ml
933080	High Flow Pouch Tan*	30	900ml
933180	High Flow Pouch Clear*	30	900ml



# B|Braun® Flexima® High Flow Pouch & Collector

For high output stomas; connects to High Flow Collector with wide bore tubing.

CODE	DESCRIPTION	PACK SIZE	VOLUME
<b>CUT-TO-FIT</b>			
42970	High Flow Tan 15-76mm	30	690ml
42971	High Flow Clear 15-76mm	30	690ml
<b>COLLECTOR</b>			
039901	High Flow Collector	5	2L



# B|Braun® Accessories

CODE	DESCRIPTION	PACK SIZE	VOLUME
039901	High Flow Collector	5	2L
28300	Urined Overnight Bag	10	2L



High Flow Collector



Urined Overnight Bag

# B|Braun® Accessories

CODE	DESCRIPTION	PACK SIZE
------	-------------	-----------

5028	Stoma Care Belt 60-150cm	1
------	--------------------------	---



# Omnigon Support Garment Range - Designed for all Activity Levels

## 3 MODERATE

- After surgery
- Wear during light exercise
- To prevent or to support a small bulge

Men's Support Pants  
Diamond Plus Briefs & Boxers  
Diamond Plus Support Waistband

## 4 INTERMEDIATE

- Wear during daily activities as prevention (housework, shopping, golfing)
- Support a more developed hernia

Support Briefs for Her  
IsoFlex Support Belt

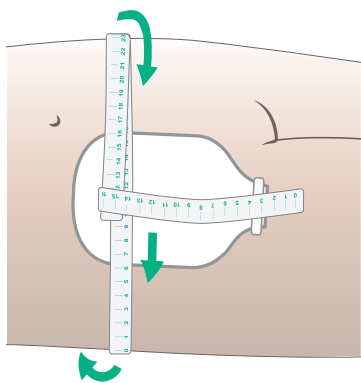
## 5 FIRM

- Wear during active work or sports as prevention
- Support a more developed hernia

Total Control Support Belt  
KoolKnit Support Belt

# How to Measure for a Support Garment

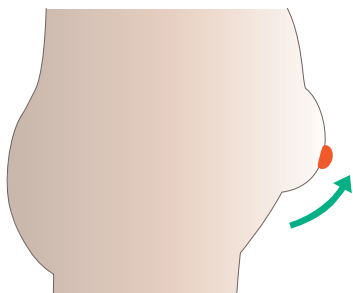
## Measuring your circumference



- Lie flat on your back on a firm surface with your legs out straight and allow your abdomen to fully relax.
- Measure around your widest part including your pouch while breathing normally.

This will give you your **circumference measurement**.

## For a support belt, you also need to measure your width



- If you do not have a hernia, measure from your hip to your waist.
- If you have a hernia, measure approximately 5cm below the hernia, up over the hernia, to your waist.

This will give you your **measurement for the width (or height) of the belt**.

Use your measurement(s) to check the size chart of the product. If you are in the last cm in the size, please order the next size up.

## Rating 3 - Moderate Support

Pack size  
1

### Men's Support Pants

- Tailored for a comfortable fit to body shape.
- All over support; double front panel for extra strength.
- Traditional front opening for convenience.
- **Black** in colour.

SIZE	CIRCUMFERENCE	CODE
<b>BLACK</b>		
Small	80 - 90cm	MSP801
Medium	85 - 100cm	MSP802
Large	95 - 115cm	MSP803
XLarge	110 - 130cm	MSP804
XXLarge	120 - 140cm	MSP805
<b>HIGH WAIST</b>		
Large	95 - 115cm	MSP803HW
XLarge	110 - 130cm	MSP804HW
XXLarge	120 - 140cm	MSP805HW





## Rating 3 - Moderate Support

Pack size  
1

### Diamond Plus Unisex Boxers

- Ideal for everyday wear after surgery and as a patient resumes light exercise.
- Seamless knit technology providing maximum comfort, moving with the body.
- Diamond panel waistband provides extra support where it is needed.
- **Black** in colour.

SIZE	CIRCUMFERENCE	CODE
<b>BLACK</b>		
Small	70 - 80cm	P-MD15-1S-B
Medium	85 - 95cm	P-MD15-2M-B
Large	100 - 110cm	P-MD15-3L-B
XLarge	115 - 125cm	P-MD20-4X-B
XXLarge	130 - 140cm	P-MD20-5XX-B



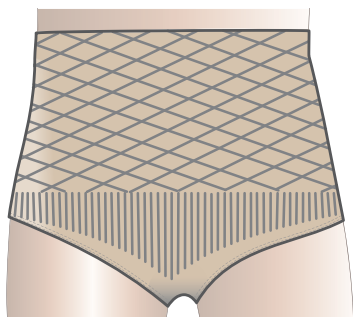
## Rating 3 - Moderate Support

Pack size  
1

### Diamond Plus Briefs

- Ideal for everyday wear after surgery and as a patient resumes light exercise.
- Seamless knit technology providing maximum comfort, moving with the body.
- Diamond panel waistband provides extra support where it is needed.
- **Black** or **neutral** in colour.

SIZE	CIRCUMFERENCE	CODE
<b>BLACK</b>		
Small	70 - 80cm	P-FD15-1S-B
Medium	85 - 95cm	P-FD15-2M-B
Large	100 - 110cm	P-FD15-3L-B
XLarge	115 - 125cm	P-FD20-4X-B
XXLarge	130 - 140cm	P-FD20-5XX-B
<b>NEUTRAL</b>		
Small	70 - 80cm	P-FD15-1S-N
Medium	85 - 95cm	P-FD15-2M-N
Large	100 - 110cm	P-FD15-3L-N
XLarge	115 - 125cm	P-FD20-4X-N
XXLarge	130 - 140cm	P-FD20-5XX-N



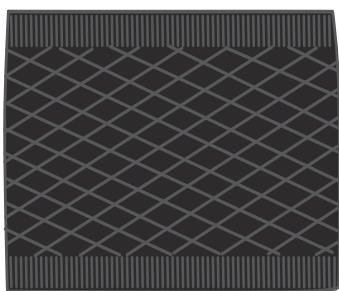
## Rating 3 - Moderate Support

Pack size  
1

### Diamond Plus Support Waistbands

- Ideal for everyday wear after surgery and as a patient resumes light exercise.
- Seamless knit technology providing maximum comfort, moving with the body.
- Can be worn discreetly, e.g. during swimming and public changing areas.
- **Black** or **neutral** in colour.

SIZE	CIRCUMFERENCE	CODE	WIDTH
<b>BLACK</b>			
Medium	85 - 95cm	B-WBDP-2M-B	30cm
Large	100 - 110cm	B-WBDP-3L-B	32cm
<b>NEUTRAL</b>			
Small	70 - 80cm	B-WBDP-1S-N	28cm
Medium	85 - 95cm	B-WBDP-2M-N	30cm
Large	100 - 110cm	B-WBDP-3L-N	32cm
XLarge	115 - 125cm	B-WBDP-4X-N	34cm
XXLarge	130 - 140cm	B-WBDP-5XX-N	36cm



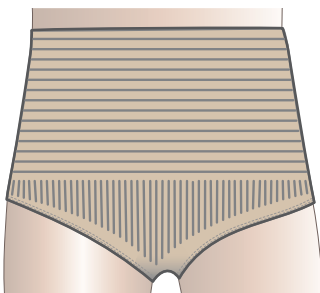
# Rating 4 - Intermediate Support

Pack size  
**1**

## Support Briefs for Her

- Ideal for everyday activities, providing a compromise between pants and a belt.
- Soft, silky lycra fabric all over.
- Hidden under the fabric is an IsoFlex band, providing firm yet comfortable support.
- **Neutral** in colour.

SIZE	CIRCUMFERENCE	CODE	WIDTH
<b>NEUTRAL</b>			
Small	70 - 80cm	SPH201N	15cm
Medium	75 - 88cm	SPH202N	15cm
Large	80 - 95cm	SPH203N	15cm
Large	80 - 95cm	SPH204N	20cm
XLarge	90 - 110cm	SPH205N	20cm
XXLarge	105 - 120cm	SPH206N	20cm
XXXLarge	115 - 130cm	SPH207N	20cm



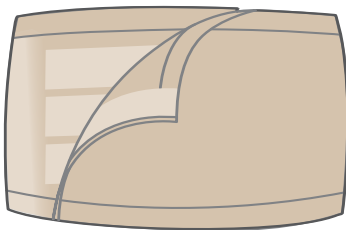
# Rating 4 - Intermediate Support

Pack size  
1

## IsoFlex Support Belts

- This belt can be adjusted, allowing wearers to find the correct balance between comfortable support and the proper function of their stoma.
- Made from a cotton based fabric allowing the skin to breathe in hot conditions. Sits flat with non-curved edging.
- Made to measure option M2M.
- **Neutral** in colour.

SIZE	CIRCUMFERENCE	CODE	WIDTH
<b>NEUTRAL</b>			
Small	75 - 90cm	BOM101	20cm
Medium	90 - 105cm	BOM102	20cm
Large	105 - 120cm	BOM103	20cm
XLarge	120 - 135cm	BOM104	20cm
XXLarge	135 - 150cm	BOM105	20cm
M2M		BOM110	20cm
Small	75 - 90cm	BOM201	26cm
Medium	90 - 105cm	BOM202	26cm
Large	105 - 120cm	BOM203	26cm
XLarge	120 - 135cm	BOM204	26cm
XXLarge	135 - 150cm	BOM205	26cm
M2M		BOM210	26cm



Width 20cm

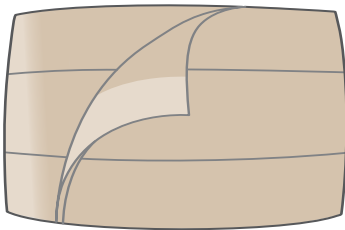
# Rating 5 - Firm Support

Pack size  
1

## Total Control Support Belts

- Provides unlimited adjustment: closure will grip anywhere along the belt, allowing wearers control over the amount of support required.
- Much easier to get the correct size (no more 'between' sizes).
- Made to measure option M2M for circumference and width (2 to 5 panels).
- **Neutral** in colour.

SIZE	CIRCUMFERENCE	WIDTH	WIDTH	WIDTH
<b>SIZE</b>		<b>15CM</b>	<b>22.5CM</b>	<b>30CM</b>
Small	60 - 90cm	TCB701	TCB801	TCB901
Medium	80 - 110cm	TCB702	TCB802	TCB902
Large	90 - 120cm	TCB703	TCB803	TCB903
XLarge	110 - 140cm	TCB704	TCB804	TCB904
XXLarge	130 - 160cm	TCB705	TCB805	TCB905
M2M		TCB710	TCB810	TCB910



Width 15cm

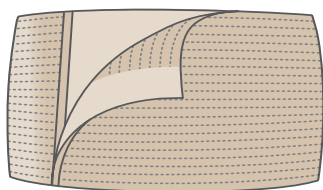
# Rating 5 - Firm Support

Pack size  
1

## KoolKnit Support Belts

- Vented fabric, allowing the skin to breathe (ideal for summer / hot and humid weather) and will also dry quickly.
- Thinner fabric that moulds to the body, providing firm and comfortable abdominal support.
- Discreet with a low profile.
- Made to measure option M2M.
- **Black** or **neutral** in colour.

SIZE	CIRCUMFERENCE	WIDTH	WIDTH	WIDTH
<b>NEUTRAL</b>		<b>17CM</b>	<b>21.5CM</b>	<b>26CM</b>
Small	75 - 90cm	KKB401N	KKB501N	KKB601N
Medium	90 - 105cm	KKB402N	KKB502N	KKB602N
Large	105 - 120cm	KKB403N	KKB503N	KKB603N
XLarge	120 - 135cm	KKB404N	KKB504N	KKB604N
XXLarge	135 - 150cm	KKB405N	KKB505N	KKB605N
M2M		KKB410N	KKB510N	KKB610N
<b>BLACK</b>		<b>17CM</b>	<b>21.5CM</b>	<b>26CM</b>
Small	75 - 90cm	KKB401B	KKB501B	KKB601B
Medium	90 - 105cm	KKB402B	KKB502B	KKB602B
Large	105 - 120cm	KKB403B	KKB503B	KKB603B
XLarge	120 - 135cm	KKB404B	KKB504B	KKB604B
XXLarge	135 - 150cm	KKB405B	KKB505B	KKB605B



Width 17cm

# Terms & Conditions

## 1. Ordering and General Queries

For efficient handling, all major queries should be addressed to:

New Zealand  
Customer Service  
Freecall **0800 440 027**

### Business Hours

9.00am – 5.00pm (NZST)  
Monday - Thursday

For orders placed via Healthcare Logistics (HCL) please send queries directly to:

HCL customer service –  
Orders  
**orders@healthcarelogistics.co.nz**

## 2. Terms

For orders placed via a secondary supplier (i.e. HCL,USL or One Link etc) payment terms will be in line with that suppliers terms and conditions, agreed upon at the

commencement of your account with them. Contact supplier directly for further queries.

For any orders placed directly with Omnigon, payment is required by credit card prior to despatch of product.

## 3. Quantities and Pricing

For any queries about quantities and pricing relating to your order please contact your supplier (i.e. HCL, USL or One Link etc) directly.

Alternatively, contact NZ customer service 0800 440 027.



# Terms & Conditions

## 4. Product Returns

In the event that product delivered is deemed not to meet order specifications (e.g. faulty product, order discrepancy, or transit damage), then claims should be lodged directly with your supplier within (7) days. For efficient processing an invoice number and date of purchase must be supplied.

For HCL customer service with returns, contact [claims@healthcarelogistics.co.nz](mailto:claims@healthcarelogistics.co.nz)

## 5. Conditions of Return

Before authorisation for returns can be issued, full details must be provided to HCL including the original order number, item codes, quantities, lot numbers, invoice numbers and reason for return.

HCL will then seek authorisation of product return from Omnigon. No goods will be accepted for return without prior authorisation from Omnigon.

Returned goods will be considered for credit only where:

- Goods are authorised to be returned
- Boxes/Packages are in original and saleable condition as deemed by Omnigon
- Goods are a standard stock line and have not been ordered as a special order
- Goods are not out of date or discontinued and have a viable expiry date
- Goods have been purchased direct from Omnigon via HCL
- Unauthorised returns will be held by HCL and the sender contacted to determine an appropriate course of action

Returned goods will be reviewed on an individual basis, not all orders will be able to be credited and returned to saleable stock.



# Notes

A series of horizontal dotted lines for taking notes, spanning the width of the page.











**NZ 0800 440 027**

[info@omnigon.com.au](mailto:info@omnigon.com.au)  
[www.omnigon.com.au](http://www.omnigon.com.au)

PO Box 24139,  
Royal Oak Auckland 1345

   [omnigoncaresolutions](https://www.omnigoncaresolutions.com)