

Instructions For Use

Flexima[®] Key Adhesive 2 Piece System



STEP 1



- Clean and dry the skin around the stoma
- Cut out (or select a pre cut size) hole to your stoma size
- Ensure a snug fit around your stoma

STEP 2



- Remove the protective film from the baseplate

STEP 3



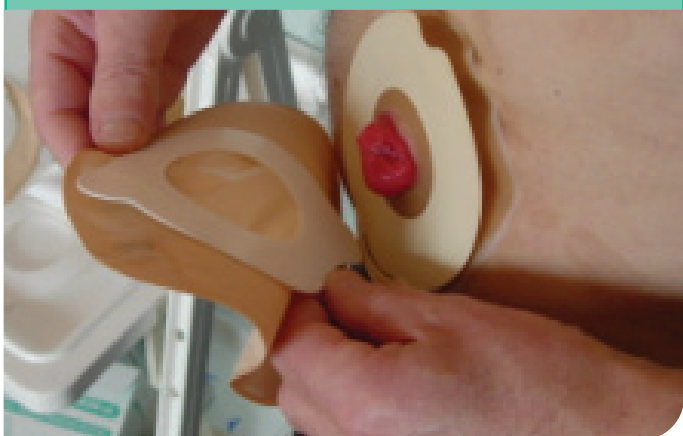
- Position the baseplate with the Key facing downwards
- Hold and massage in position for a few seconds to ensure good adhesion

STEP 4



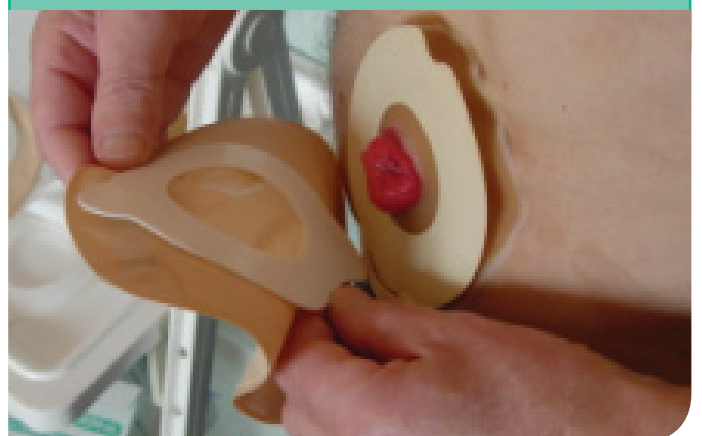
- Remove the protective paper from the pouch adhesive ring

STEP 5



- Insert pouch tab into the key slot on the baseplate

STEP 6



- Push the pouch down gently onto the adhesive ring to ensure secure application of the pouch

STEP 7

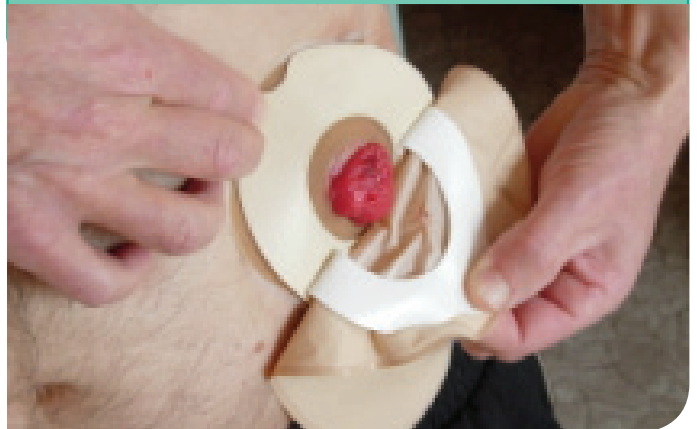
- Give the pouch a gentle tug in the downward direction to check it is securely attached

STEP 8

- To remove the pouch, apply light pressure to the base
- Grip the tab at the top of the pouch and pull down

STEP 9

- Remove the pouch slowly

STEP 10

- Clean the base using a cotton pad and water
- Ensure the base is clean and dry
- Apply a new pouch