

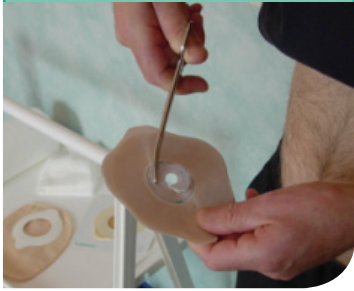
Flexima® Key Instructions For Use

Flexima® Key Adhesive 2 Piece System



OMNIGON

Step 1



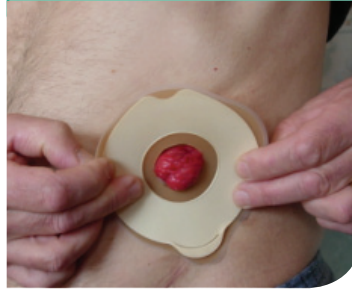
- Clean and dry the skin around the stoma
- Cut out (or select a pre cut size) hole to your stoma size
- Ensure a snug fit around your stoma

Step 2



- Remove the protective film from the baseplate

Step 3



- Position the baseplate with the Key facing downwards
- Hold & massage in position for a few seconds to ensure good adhesion

Step 4



- Remove the protective paper from the pouch adhesive ring

Step 5



- Insert pouch tab into the key slot on the baseplate

Step 6



- Push the pouch down gently onto the adhesive ring to ensure secure application of the pouch

Step 7



- Give the pouch a gentle tug in the downward direction to check it is securely attached

Step 8



- To remove the pouch, apply light pressure to the base
- Grip the tab at the top of the pouch and pull down

Step 9



- Remove the pouch slowly

Step 10



- Clean the base using a cotton pad and water
- Ensure the base is clean and dry
- Apply a new pouch

Contact Omnigon Customer Service for more information on

Free call:
1800 819 274 (AUS)
0800 440 027 (NZ)

B | BRAUN