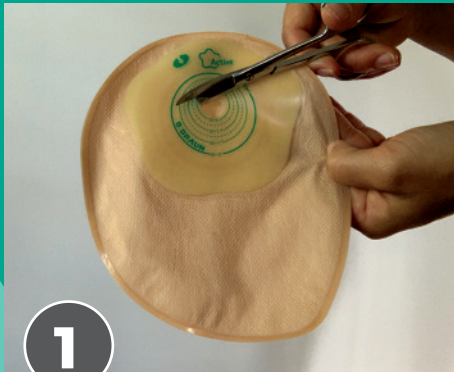


Instructions for use Colostomy



1

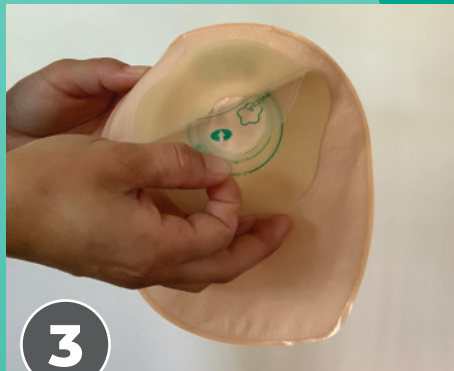
If using a cut-to-fit pouch, cut the hole in the baseplate so it fits the size of your stoma, leaving a 2-3mm clearance.



2

If unsure of size, re-check the stoma using a measuring guide.

TIP
Re-measure your stoma intermittently, to ensure your pouch fits correctly.



3

After you have cleaned and dried the skin well, remove the backing plastic using the tab in the direction of the green arrow, exposing the adhesive part.



4

Fold your pouch in half, line up bottom edge of the hole to bottom edge of the stoma and press the lower half of the pouch into place.



5

Fold the top over the stoma and press adhesive to the skin, holding for a few seconds.

POUCH REMOVAL



6

Starting at the top of the pouch, gently peel the top edge away from the skin.

The use of a medical adhesive remover product is highly recommended.



7

With hands on either side of the pouch use a downward rolling action to gently peel the adhesive from the skin, continuing until the pouch is completely removed.