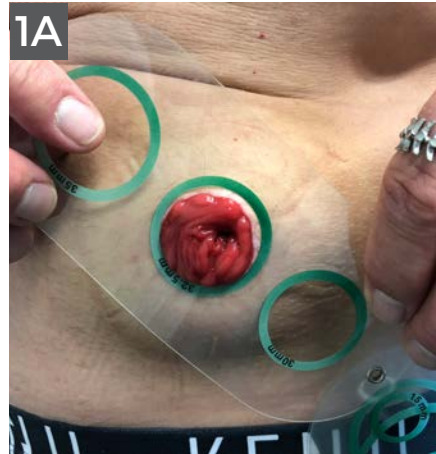


### 1. Preparing the baseplate

- 1A.** Use a measuring guide to determine the size of your stoma.
- 1B.** Cut the skin barrier to the measured size of your stoma.

It is important to cut the baseplate to the right size and shape of your stoma. Remain within the maximum possible cutting line on the baseplate and allow about 2mm around your stoma for a secure fit. The stoma should not be strangled by the base or the opening too wide to cause skin irritation from your output.



**Note:** Regularly check the size of your stoma and adjust the cutting area if necessary.

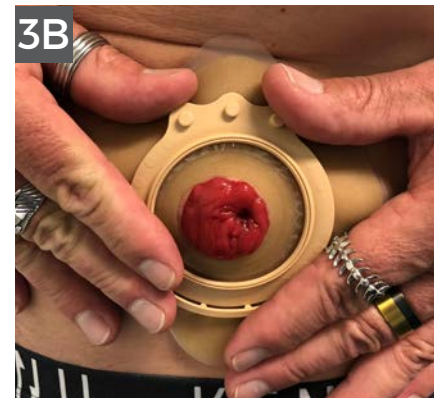
### 2. Preparing the skin

Gently clean the skin around your stoma with warm water. Pay particular attention to where the stoma and skin meet. Ensure skin is dry before applying the baseplate.

Alcohol, creams and other antiseptics may prevent the base from staying in place and should be avoided.

### 3. Applying the baseplate

- 3A.** Remove the protective backing off the baseplate. Position the baseplate over your stoma taking care to place the 3 buttons at the top.
- 3B.** Carefully press baseplate on and ensure baseplate is well stuck down all around stoma and edges of baseplate.

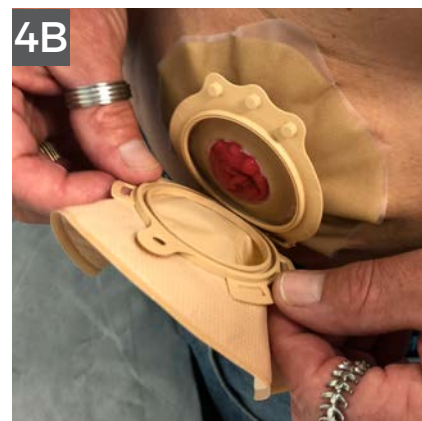


## 4. Clipping the pouch

**4A.** Check that the outlet of the pouch is closed (urostomy and drainable).

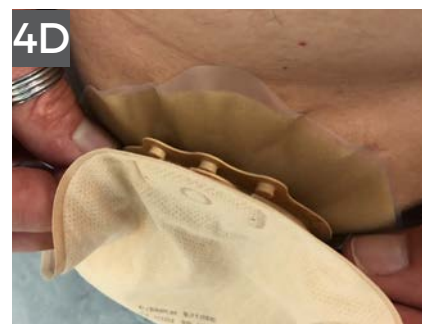
Hold the pouch by its side wings.

**4B.** Insert the guiding tab, situated at the bottom of the coupling ring, into one of the slots at the bottom of the base ring (depending on which position you want to use the product in).



**4C.** Clip the pouch's upper tab on to the corresponding base button.

**4D.** Interlock the two rings by pressing them together over the entire circumference.



**4E.** It is possible to place the thumbs under the base plate ring to obtain a better grip.

**4F.** Finalise the coupling of the two rings.

A gentle tug on the pouch will confirm the pouch is locked securely in place.



## 5. Removing the pouch

Un-clip the button from the baseplate.

**5A. & 5B.** While supporting the baseplate with one hand, separate the two rings by pulling gently on the upper button from the baseplate of the pouch in a downward motion.

