

Instructions for use - Urostomy


1

Close the bung before applying the pouch.


2

Measure your stoma and cut the baseplate to the appropriate size/shape. Remove the protective backing from the baseplate, exposing the adhesive part.


3

Fold your pouch in half, line up bottom edge of the hole to bottom edge of the stoma and press the lower half of pouch into place.


4

Fold the top over the stoma and press adhesive to the skin.

POUCH EMPTYING


5

Unplug the bung while pinching the silicone outlet to stop urine flow.


6

Point the bung towards the toilet bowl and slowly release the silicone outlet while holding the back piece of plastic back to prevent wetness.


7

Once emptied, dry the end and reinsert plug into bung.



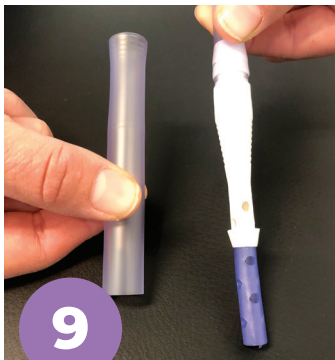
POUCH REMOVAL

8

Starting at the top of the pouch, gently peel the top edge away from the skin, supporting the skin with the other hand. Peel the pouch downwards, away from the skin. The use of a medical adhesive remover product is highly recommended.



NIGHT DRAINAGE BAG



9

Remove plastic tube from tip of night drainage bag. Do not discard.



10

Unplug urostomy bung.



11

Insert end of night drainage bag into open bung of pouch, ensuring it is pushed in well and is secure.



B BRAUN URIMED OVERNIGHT BAG (CODE: 28300)

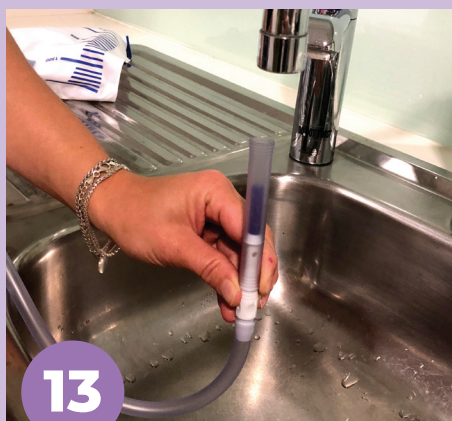
An overnight 2 litre capacity urine drainage bag with easy to read measurement markers. The wide bore, 120cm soft tubing ensures effective drainage into the bag.

EMPTYING & CLEANING NIGHT DRAINAGE BAG



12

Empty bag into toilet by turning outlet tap down.



13

Replace plastic tubing over tip of night drainage bag.



14

Rinse bag with tap water. Hang to dry.