

# Instructions for use - Urostomy



1

Measure your stoma and cut the baseplate to the appropriate size/shape. Remove the protective backing from the baseplate, exposing the adhesive part.



2

Centre the baseplate opening over the stoma and press into place. To secure well, run your finger around the baseplate, starting in the centre moving towards the outer edge. Use your hands to warm the baseplate to your skin for about 30 seconds, this will help initial adhesion.



3

Do not remove the blue and white (bunny ears) protective plastic at this stage.



4

Align the pouch ring with the bottom of the baseplate ring. Run your fingers around the ring until you feel it clip over the top.



5

Press around the entire ring to ensure pouch is attached.



6

Grip one or both of the blue and white (bunny ears) plastic tabs.





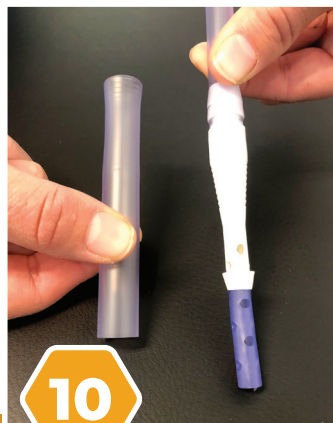
**7**  
Pull the tabs down and around from the baseplate and remove the protective plastic.



**8**  
Press down around the outer edge of the ring to ensure bag is adhered to baseplate.



**9**  
**POUCH REMOVAL**  
With one hand support the base to your abdomen and with the other hand grip the ribbed tab on the pouch and pull downwards.



**10**  
**NIGHT DRAINAGE BAG**  
Remove plastic tube from tip of night drainage bag. Do not discard.



**11**  
Un-plug urostomy bung.



**12**  
Insert end of night drainage bag into open bung of pouch, ensuring it is pushed in well and is secure.



**13**  
**EMPTYING & CLEANING NIGHT DRAINAGE BAG**  
Empty bag into toilet by turning outlet tap down.



**14**  
Replace plastic tubing over tip of night drainage bag.



**15**  
Rinse bag with tap water. Hang to dry.



**B BRAUN URIMED OVERNIGHT BAG (CODE: 28300)**

An overnight 2 litre capacity urine drainage bag with easy to read measurement markers. The wide bore, 120cm soft tubing ensures effective drainage into the bag.



**OMNIGON**

AU 1800 819 274 info@omnigon.com.au  
NZ 0800 440 027 www.omnigon.com.au